

Appendix A Master Programme

Activity ID	Activity Name	Original Duration	Remaining Duration	Activity % Complete	Current Start	Current Finish	Late Start	Late Finish	Total Float	M85 Remarks	2024			
											Dec 85	Jan 86	Feb 87	Mar 88
Programme for Design and Construction Works WP7B-M85 - 3-Month														
Key Dates														
Contractual Key Dates														
01-1020(7A) Extension of Time (EOT) Granted (in working days)														
License/Permit Applications														
License Application for Brine Discharge														
03-3980(7) Issuance of Temporary License by EPD														
03-3990(7) Public Consultation														
03-4000(7) Issuance of Conditional License by EPD														
03-4010(7) Issuance of Brine Discharge License by EPD														
DG Licence														
Day Tank & Fuel Oil Storage (Cat 5)														
03-1410 DGD and VD Review and Approval of Submission														
E. Gen RM for WMF Substation														
03-1420 DGD Compliance Inspection, Defects Rectification and Re-inspection														
03-1430 VD Compliance Inspection, Defects Rectification and Re-inspection														
03-1440 Issue of DG License														
Fuel Oil System														
03-3850 DGD Compliance Inspection, Defects Rectification and Re-inspection														
03-3860 VD Compliance Inspection, Defects Rectification and Re-inspection														
03-3870 Issuance of DG License														
Chemical Stores (all Cat)														
03-1490 DGD and VD Review and Approval of Submission														
03-1500 DGD Compliance Inspection, Defects Rectification and Re-inspection														
03-1510 VD Compliance Inspection, Defects Rectification and Re-inspection														
03-1520 Issuance of DG License														
Boilers and Pressure Vessels License														
03-1930(3) L1 & L2 Preparation and Submit inspection report and associated document to LD														
03-1940(3) L1 & L2 Issuance of all Boiler License														
03-1950(M83) L3 & L4 Completion of on-site boiler installation & Testing														
03-1960(M83) L3 & L4 Preparation and Submit inspection report and associated document to LD														
03-1970(M83) L3 & L4 Issuance of all Boiler License														
03-1980(M83) L5 & L6 Completion of on-site boiler installation & Testing														
03-1980(M83)10 L5 & L6 Preparation and Submit inspection report and associated document to LD														
Lifts or Escalators														
03-1060 Notification of Commencement of Works Involving Installation or Maintenance														
Design Submissions														
AIP Design Package Submissions														
AIP Testing and Commissioning (2.12)														
05-2680 Plant commissioning plan (2.12.04)														
AIP Miscellaneous Works (2.14)														
05-2710 Existing onshore crane replacement works at Portion 2														
AIP O&M Packages														
05-8010(6E) Warehouse (O&M Scope)														
05-8020(6E) Workshop (O&M Scope)														
05-8050-1(M55) Design of (pilot) Electric Vehicle														
DDA Design Package Submissions														
DDA Ground Treatment, Reclamation, Seawall, Breakwater, Berth (2.2)														
05-3450 Seawall design (2.2.20)														
05-3460 Breakwater design (2.2.21)														
05-3470 Berth design (2.2.22)														
05-3480 Onshore crane Facility (2.2.23)														
05-3490 Onshore vessel power supply system (2.2.24)														
DDA Incineration Plant Buildings (2.3)														
Electrical and instrumentation works design (2.3.15)														
Operation Management System (2.3.15.04)														
05-5400-1(M22) Automatic Traffic Control System (ATCS)														
2.3.15.05														
05-3390-4(M55) Electrical and Instrumentation Works - Waste Crane and Grapple System (2.3.15.05.04)														
Building services design (excluding fire services installation design) (2.3.18)														
05-3750 Lifts and Escalators														
05-3780 Vehicle & Container Wash System														
DDA Mechanical Treatment Plant Building (2.4)														
05-5190 Electrical and instrumentation works design														
05-5200 Mechanical works design (2.4.16)														
Building services design (excluding fire services installation design) (2.4.18)														
05-3910 Lifts and Escalators														
DDA Wastewater Treatment Plant (2.5)														
05-3960 Mechanical works design (2.5.16) (5 Packages)														
DDA Water Treatment Plant Building (2.6)														
05-4090 Mechanical works design (2.6.16)														

3-Month Rolling Programme (December 2024)

■ Actual Work ■ Critical Remaining Work ◆ Actual Milestone
■ Remaining Work ◆ Milestone ◆ Critical Milestone

Activity ID	Activity Name	Original Duration	Remaining Duration	Activity % Complete	Current Start	Current Finish	Late Start	Late Finish	Total Float	M85 Remarks	2024			
											Dec 85	Jan 86	Feb 87	Mar 88
Electrical and instrumentation works design (2.6.15)														
05-4080	Water Treatment Plant (WTP) - Variable Speed Drive (2.6.15.01)	238	18	92.44%	11-Apr-22 A	30-Jan-25	14-Dec-24	27-Oct-25	270					
05-7450(7B)	WTP Process Control Philosophy (2.6.15.05.03)	90	31	65.56%	16-Jan-24 A	30-Jan-25	27-Sep-25	27-Oct-25	270					
DDA Administration Building (2.7)														
05-4200	Electrical and instrumentation works design (2.7.13)	90	20		02-Dec-22 A	19-Jan-25	06-Dec-24	14-Apr-25	85					
Building services design (excluding fire services installation design) (2.7.15)														
05-4280	Lifts and Escalators	90	7	92.22%	13-Jul-23 A	06-Jan-25	06-Dec-24	12-Dec-24	-25					
DDA IWMF Substation (2.8)														
Electrical and instrumentation works design (2.8.15)														
2.8.15.06		90	6		16-Oct-21 A	05-Jan-25	25-Dec-24	30-Dec-24	-6					
05-4320	Electrical and instrumentation works design (2.8.15.06.01 to 40)	90	6	93.33%	16-Oct-21 A	05-Jan-25	25-Dec-24	30-Dec-24	-6					
DDA Chimney														
Building services design (excluding fire services installation design)														
05-6050-1(5a)	Lift	90	6	93.33%	13-Jul-23 A	05-Jan-25	07-Dec-24	12-Dec-24	-24					
DDA Roads and Utilities (2.10)														
Permanent road works layout on the Artificial Island (2.10.13)														
05-4480	Road signage and markings	90	18	80%	08-Aug-22 A	17-Jan-25	07-Feb-25	24-Feb-25	38					
05-5400	Roads and hardstandings layout	90	18	80%	08-Aug-22 A	17-Jan-25	07-Feb-25	24-Feb-25	38					
Sewerage design on the Artificial Island (2.10.14)														
05-4430	Foul Sewerage	60	15	75%	14-Mar-23 A	14-Jan-25	25-Apr-25	09-May-25	115					
05-4440	Contaminated Sewerage (Site Wide Sewerage System)	60	15	75%	14-Mar-23 A	14-Jan-25	25-Apr-25	09-May-25	115					
05-4440-2(M55)	Ship-to-shore Sewage Transfer System for Passenger Ferry	90	32	64.91%	13-Jan-21 A	31-Jan-25	14-Apr-25	15-May-25	104					
Drainage system design on the Artificial Island (2.10.15)														
05-5310	Surface water Drainage System	90	18	80%	22-Feb-23 A	17-Jan-25	22-Apr-25	09-May-25	112					
05-5340(M81)	Pipework Design and Operation for Brine Discharge (2.10.15.05)	90	31	65.56%	20-Feb-23 A	30-Jan-25	16-Mar-25	15-Apr-25	75					
Water supply system design on the Artificial Island (2.10.16)														
05-5290	Water Tanks (2.11.20.01)	60	18	70%	28-Apr-21 A	17-Jan-25	11-Oct-24	28-Oct-24	-81					
05-5300-1(M24)	E&M system for seawater intake (2.10.16.07)	105	14	86.67%	04-Apr-22 A	13-Jan-25	15-Oct-24	28-Oct-24	-77					
05-5300-3(5a)	Chemical scrubber system for odour control (2.10.16.10.01)	105	32	70%	18-Dec-23 A	31-Jan-25	27-Sep-24	28-Oct-24	-95					
Design of telecommunication and other utilities (2.10.18)														
05-4580	Power Distribution System concept / schematics (2.10.18.01.01)	45	30	60%	25-Mar-23 A	29-Jan-25	16-Aug-24	14-Sep-24	-137					
05-4590	Site Lighting Concept / Schematics (2.10.18.02.01)	45	30	60%	03-Oct-23 A	29-Jan-25	28-Oct-24	26-Nov-24	-64					
05-4600	Lightning Protection System concept / schematics (2.10.18.03.01)	45	30	60%	11-Jun-24 A	29-Jan-25	28-Oct-24	26-Nov-24	-64					
05-4610	Site ELV Network System - Communications System concept / schematics	75	30	60%	16-Aug-22 A	29-Jan-25	28-Oct-24	26-Nov-24	-64					
05-4620	Site ELV Network System - Security Systems concept / schematics	75	30	60%	14-Jun-22 A	29-Jan-25	28-Oct-24	26-Nov-24	-64					
05-4630	Site ELV Network System - Navigation aids concept / schematics	60	60	0%	31-Dec-24	28-Feb-25	28-Sep-24	26-Nov-24	-94					
05-4640	Microwave transmission of FS direct link	105	3	97.14%	22-Aug-22 A	02-Jan-25	24-Nov-24	26-Nov-24	-37					
05-4650	Fuel Handling System concept / schematics	60	30	50%	14-Dec-24 A	29-Jan-25	10-Oct-24	08-Nov-24	-82					
DDA Architectural, Finishes and Landscaping Works (2.11)														
External and internal finishes design														
05-4670	External and internal finishes design for Incineration Plant Building (2.11.15.01)	90	22	75.08%	19-Sep-22 A	22-Jan-25	05-Nov-24	27-Nov-24	-56					
05-4720	External and internal finishes design for Reception Pavilion (2.11.01.05)	90	28	68.89%	10-Nov-22 A	27-Jan-25	30-Dec-24	26-Jan-25	-1					
05-4730	External and internal finishes design for MT Plant Building (2.11.16)	60	18	69.68%	16-Aug-23 A	18-Jan-25	23-Oct-24	10-Nov-24	-68					
05-4740	External and internal finishes design for the Wastewater Treatment Plant (2.11.17)	60	17	71.33%	06-Jun-23 A	17-Jan-25	19-Nov-24	06-Dec-24	-41					
05-4750	External and internal finishes design for the Water Treatment Plant Building (2.11.08)	60	19	68.89%	16-Aug-23 A	18-Jan-25	16-Oct-24	03-Nov-24	-76					
05-4760	External and internal finishes design for the Administration Building (2.11.19)	60	19	68.37%	21-Sep-23 A	18-Jan-25	12-Dec-24	30-Dec-24	-19					
05-5430	External and internal finishes design for Elevated Driveway	90	22	75.72%	15-Jun-21 A	21-Jan-25	10-Sep-24	01-Oct-24	-112					
Landscaping Works (2.11.21)														
05-4780	Landscape Masterplan & Landscape Design for Water Feature (2.11.19.01)	105	2	98%	26-Jan-23 A	02-Jan-25	27-Apr-25	29-Apr-25	118					
DDA Testing and Commissioning (2.12)														
05-4810-2(M55)	FAT of DCS - Software SIL FAT Plant for Process Island (2.12.09.03.01)	105	10	90.48%	19-May-22 A	09-Jan-25	27-Nov-24	06-Dec-24	-34					
DDA Transportation Facilities for the Operation (2.13)														
05-4850	Design of vehicles for MSW and Ash and Residues delivery (2.13.05)	186	186	0%	30-Jan-25	03-Aug-25	25-Apr-25	27-Oct-25	85					
05-4860	Design of marine vessels for the use of the Employer and visitors (2.13.06)	240	121	49.58%	30-Jun-23 A	30-Apr-25	29-Jun-25	27-Oct-25	180					
DDA Miscellaneous Works (2.14)														
05-4870	Process Related CCTV and Existing onshore crane replacement works at Portion 2 (2.14.05)	220	148	32.73%	20-Oct-24 A	27-May-25	02-Nov-25	29-Mar-26	306					
05-4880	Design of visitors and environmental education facilities (2.14.06)	62	62	0%	30-Jan-25	01-Apr-25	27-Jun-25	27-Aug-25	148					
DDA Miscellaneous Detailing (2.15)														
05-4890	Covered walkway at passenger berth (2.15.09)	70	21	70%	06-Sep-23 A	20-Jan-25	04-Oct-24	25-Oct-24	-88					
05-4900	Gatehouses (2.15.09)	60	18	70%	06-Sep-23 A	17-Jan-25	07-Feb-25	24-Feb-25	38					
05-4910	Weighbridge office (2.15.08)	32	26	20%	01-Nov-24 A	25-Jan-25	19-Oct-24	13-Nov-24	-73					
DDA Auxiliary Plant Systems (2.16)														
05-4930	Vehicle Fuel Filling Station (2.16.05)	30	24	20%	07-Mar-23 A	23-Jan-25	16-Sep-24	09-Oct-24	-106					
05-4940-2(5a)	Hoisting systems (2.16.10)	180	31	82.78%	24-May-23 A	30-Jan-25	11-Mar-25	10-Apr-25	70					
DDA O&M Packages														
05-8070(6E)	Warehouse (O&M Scope)	181	181	0%	31-Jan-25	30-Jul-25	25-Oct-24	23-Apr-25	-98					
05-8080(6E)	Workshop (O&M Scope)	181	181	0%	31-Jan-25	30-Jul-25	25-Oct-24	23-Apr-25	-98					
05-8090(6E)	Ash & Residues Container (O&M Scope)	180	151	16.11%	24-Dec-24 A	30-May-25	24-Nov-24	23-Apr-25	-37					
05-8110(6E)	Other Mobile Plants (O&M Scope)	181	181	0%	30-Jan-25	29-Jul-25	25-Oct-24	23-Apr-25	-97					
05-8110-1(M55)	Design of (pilot) Electric Vehicle	180	180	0%	28-Feb-25	26-Aug-25	25-Dec-24	22-Jun-25	-65					
System Commissioning Plan														
05-4820-1(M83)	SAT Trial Plan Volume (2)	90	27	70%	12-Apr-24 A	26-Jan-25	17-Aug-24	24-Feb-25	-4					

Activity ID	Activity Name	Original Duration	Remaining Duration	Activity % Complete	Current Start	Current Finish	Late Start	Late Finish	Total Float	M85 Remarks	2024		2025		Mar 88
											Dec 85	Jan 86	Feb 87	Mar 88	
05-4830	System Commissioning Plan	90	60	80%	13-Aug-24 A	28-Feb-25	27-Dec-24	24-Feb-25	-4						System Commissioning Plan
Procurement of Major Equipment															
		1061	230		23-May-22 A	17-Aug-25	30-Jul-24	16-Mar-25	-154						
Off-site Fabrication of Incineration Modules															
		919	74		23-May-22 A	14-Mar-25	12-Oct-24	27-Dec-24	-77						
Fabrication of Module (TPU)															
		919	74		23-May-22 A	14-Mar-25	12-Oct-24	27-Dec-24	-77						
PFab 1- Line 1															
		78	32		10-Jun-24 A	31-Jan-25	05-Nov-24	06-Dec-24	-56						
Precommissioning															
06-TPU-1-1030	PFab 1-Line 1 - Pre-commissioning	78	32	58.97%	10-Jun-24 A	31-Jan-25	05-Nov-24	06-Dec-24	-56						PFab 1-Line 1 - Pre-commissioning
PFab 1- Line 2															
		70	32		30-Sep-24 A	31-Jan-25	05-Nov-24	06-Dec-24	-56						
Precommissioning															
06-TPU-2-1020	PFab 1-Line 2 - Pre-commissioning	70	32	54.29%	30-Sep-24 A	31-Jan-25	05-Nov-24	06-Dec-24	-56						PFab 1-Line 2 - Pre-commissioning
PFab 1- Line 3															
		861	62		23-May-22 A	02-Mar-25	12-Oct-24	24-Dec-24	-68						
E&I Installation															
		238	32		27-May-24 A	31-Jan-25	12-Oct-24	12-Nov-24	-80						
Electrical															
06-TPU-3-1270	PFab 1-Line 3 - Electrical Cable Pulling and Termination	180	32	82.22%	27-May-24 A	31-Jan-25	12-Oct-24	12-Nov-24	-80						PFab 1-Line 3 - Electrical Cable Pulling and Termination
06-TPU-3-1280	PFab 1-Line 3 - Electrical Equipment Installation	180	32	82.22%	03-Jun-24 A	31-Jan-25	12-Oct-24	12-Nov-24	-80						PFab 1-Line 3 - Electrical Equipment Installation
Instrument															
06-TPU-3-1300	PFab 1-Line 3 - Instrument Cable Pulling and Termination	180	32	82.22%	27-May-24 A	31-Jan-25	12-Oct-24	12-Nov-24	-80						PFab 1-Line 3 - Instrument Cable Pulling and Termination
06-TPU-3-1310	PFab 1-Line 3 - Instrument Equipment Installation	180	32	82.22%	03-Jun-24 A	31-Jan-25	12-Oct-24	12-Nov-24	-80						PFab 1-Line 3 - Instrument Equipment Installation
06-TPU-3-1320	PFab 1-Line 3 - Instrument Tubing Installation	180	32	82.22%	03-Jun-24 A	31-Jan-25	12-Oct-24	12-Nov-24	-80						PFab 1-Line 3 - Instrument Tubing Installation
Insulation															
06-TPU-3-1010	PFab 1-Line 3 - Insulation	769	31	95.97%	23-May-22 A	30-Jan-25	24-Nov-24	24-Dec-24	-37						PFab 1-Line 3 - Insulation
Precommissioning															
06-TPU-3-1020	PFab 1-Line 3 - Pre-commissioning	60	60	0%	02-Jan-25	02-Mar-25	26-Oct-24	24-Dec-24	-68	Update Original Duration from 62d to 60d					PFab 1-Line 3 - Pre-commissioning
PFab 1- Line 4															
		891	60		25-May-22 A	28-Feb-25	12-Oct-24	24-Dec-24	-66						
E&I Installation															
		238	32		03-Jun-24 A	31-Jan-25	12-Oct-24	12-Nov-24	-80						
Electrical															
06-TPU-4-1270	PFab 1-Line 4 - Electrical Cable Pulling and Termination	180	32	82.22%	03-Jun-24 A	31-Jan-25	12-Oct-24	12-Nov-24	-80						PFab 1-Line 4 - Electrical Cable Pulling and Termination
06-TPU-4-1280	PFab 1-Line 4 - Electrical Equipment Installation	180	32	82.22%	03-Jun-24 A	31-Jan-25	12-Oct-24	12-Nov-24	-80						PFab 1-Line 4 - Electrical Equipment Installation
Instrument															
06-TPU-4-1300	PFab 1-Line 4 - Instrument Cable Pulling and Termination	180	32	82.22%	03-Jun-24 A	31-Jan-25	12-Oct-24	12-Nov-24	-80						PFab 1-Line 4 - Instrument Cable Pulling and Termination
06-TPU-4-1310	PFab 1-Line 4 - Instrument Equipment Installation	180	32	82.22%	03-Jun-24 A	31-Jan-25	12-Oct-24	12-Nov-24	-80						PFab 1-Line 4 - Instrument Equipment Installation
06-TPU-4-1320	PFab 1-Line 4 - Instrument Tubing Installation	180	32	82.22%	03-Jun-24 A	31-Jan-25	12-Oct-24	12-Nov-24	-80						PFab 1-Line 4 - Instrument Tubing Installation
Insulation															
06-TPU-4-1010	PFab 1-Line 4 - Insulation	767	31	95.96%	25-May-22 A	30-Jan-25	24-Nov-24	24-Dec-24	-37						PFab 1-Line 4 - Insulation
Precommissioning															
06-TPU-4-1020	PFab 1-Line 4 - Pre-commissioning	53	53	0%	07-Jan-25	28-Feb-25	02-Nov-24	24-Dec-24	-66						PFab 1-Line 4 - Pre-commissioning
PFab 1- Line 5															
		822	74		04-Jun-22 A	14-Mar-25	15-Oct-24	27-Dec-24	-77						
E&I Installation															
		224	60		01-Aug-24 A	28-Feb-25	15-Oct-24	13-Dec-24	-77						
Electrical															
06-TPU-5-1270	PFab 1-Line 5 - Electrical Cable Pulling and Termination	180	60	66.67%	01-Aug-24 A	28-Feb-25	15-Oct-24	13-Dec-24	-77						PFab 1-Line 5 - Electrical Cable Pulling and Termination
06-TPU-5-1280	PFab 1-Line 5 - Electrical Equipment Installation	180	60	66.67%	01-Aug-24 A	28-Feb-25	15-Oct-24	13-Dec-24	-77						PFab 1-Line 5 - Electrical Equipment Installation
Instrument															
06-TPU-5-1300	PFab 1-Line 5 - Instrument Cable Pulling and Termination	180	60	66.67%	01-Aug-24 A	28-Feb-25	15-Oct-24	13-Dec-24	-77						PFab 1-Line 5 - Instrument Cable Pulling and Termination
06-TPU-5-1310	PFab 1-Line 5 - Instrument Equipment Installation	180	60	66.67%	01-Aug-24 A	28-Feb-25	15-Oct-24	13-Dec-24	-77						PFab 1-Line 5 - Instrument Equipment Installation
06-TPU-5-1320	PFab 1-Line 5 - Instrument Tubing Installation	180	60	66.67%	01-Aug-24 A	28-Feb-25	15-Oct-24	13-Dec-24	-77						PFab 1-Line 5 - Instrument Tubing Installation
Insulation															
06-TPU-5-1010	PFab 1-Line 5 - Insulation	822	60	92.7%	04-Jun-22 A	28-Feb-25	15-Oct-24	13-Dec-24	-77						PFab 1-Line 5 - Insulation
Precommissioning															
06-TPU-5-1020	PFab 1-Line 5 - Pre-commissioning	43	43	0%	31-Jan-25	14-Mar-25	15-Nov-24	27-Dec-24	-77	Update Original Duration from 60d to 43d					PFab 1-Line 5 - Pre-commissioning
PFab 1- Line 6															
		850	74		08-Jul-22 A	14-Mar-25	15-Oct-24	27-Dec-24	-77						
E&I Installation															
		224	60		01-Aug-24 A	28-Feb-25	15-Oct-24	13-Dec-24	-77						
Electrical															
06-TPU-6-1270	PFab 1-Line 6 - Electrical Cable Pulling and Termination	180	60	66.67%	01-Aug-24 A	28-Feb-25	15-Oct-24	13-Dec-24	-77						PFab 1-Line 6 - Electrical Cable Pulling and Termination
06-TPU-6-1280	PFab 1-Line 6 - Electrical Equipment Installation	180	60	66.67%	01-Aug-24 A	28-Feb-25	15-Oct-24	13-Dec-24	-77						PFab 1-Line 6 - Electrical Equipment Installation
Instrument															
06-TPU-6-1300	PFab 1-Line 6 - Instrument Cable Pulling and Termination	180	60	66.67%	01-Aug-24 A	28-Feb-25	15-Oct-24	13-Dec-24	-77						PFab 1-Line 6 - Instrument Cable Pulling and Termination
06-TPU-6-1310	PFab 1-Line 6 - Instrument Equipment Installation	180	60	66.67%	01-Aug-24 A	28-Feb-25	15-Oct-24	13-Dec-24	-77						PFab 1-Line 6 - Instrument Equipment Installation
06-TPU-6-1320	PFab 1-Line 6 - Instrument Tubing Installation	180	60	66.67%	01-Aug-24 A	28-Feb-25	15-Oct-24	13-Dec-24	-77						PFab 1-Line 6 - Instrument Tubing Installation
Insulation															
06-TPU-6-1010	PFab 1-Line 6 - Insulation	761	60	92.12%	08-Jul-22 A	28-Feb-25	15-Oct-24	13-Dec-24	-77						PFab 1-Line 6 - Insulation
Precommissioning															
06-TPU-6-1020	PFab 1-Line 6 - Pre-commissioning	44	44	0%	30-Jan-25	14-Mar-25	14-Nov-24	27-Dec-24	-77						PFab 1-Line 6 - Pre-commissioning
Fabrication of Module (FGC)															
		863	74		30-Jun-22 A	14-Mar-25	12-Oct-24	27-Dec-24	-77						
PFab 2 - Line 1															
		78	32		10-Jun-24 A	31-Jan-25	05-Nov-24	06-Dec-24	-56						
Precommissioning															
06-FGC-1-1190	PFab 2-Line 1 - Pre-commissioning	78	32	58.97%	10-Jun-24 A	31-Jan-25	05-Nov-24	06-Dec-24	-56						PFab 2-Line 1 - Pre-commissioning
PFab 2 - Line 2															
		70	32		30-Sep-24 A	31-Jan-25	05-Nov-24	06-Dec-24	-56						
Precommissioning															
06-FGC-2-1020	PFab 2-Line 2 - Pre-commissioning	70	32	54.29%	30-Sep-24 A	31-Jan-25	05-Nov-24	06-Dec-24	-56						PFab 2-Line 2 - Pre-commissioning
PFab 2 - Line 3															
		271	60		27-May-24 A	28-Feb-25	12-Oct-24	24-Dec-24	-66						
E&I Installation															
		238	32		27-May-24 A	31-Jan-25	12-Oct-24	12-Nov-24	-80						
Electrical															
06-FGC-3-1250	PFab 2-Line 3 - Electrical Cable Pulling and Termination	180	32	82.22%	27-May-24 A	31-Jan-25	12-Oct-24	12-Nov-24	-80						PFab 2-Line 3 - Electrical Cable Pulling and Termination
06-FGC-3-1260	PFab 2-Line 3 - Electrical Equipment Installation	180	32	82.22%	03-Jun-24 A	31-Jan-25	12-Oct-24	12-Nov-24	-80						PFab 2-Line 3 - Electrical Equipment Installation
Instrument															
06-FGC-3-1280	PFab 2-Line 3 - Instrument Cable Pulling and Termination	212	32	82.22%	27-May-24 A	31-Jan-25	12-Oct-24	12-Nov-24	-80						PFab 2-Line 3 - Instrument Cable Pulling and Termination

Activity ID	Activity Name	Original Duration	Remaining Duration	Activity % Complete	Current Start	Current Finish	Late Start	Late Finish	Total Float	M85 Remarks	2024				
											Dec 85	Jan 86	Feb 87	Mar 88	
06-FGC-3-1290	PFab 2-Line 3 - Instrument Equipment Installation	180	32	82.22%	03-Jun-24 A	31-Jan-25	12-Oct-24	12-Nov-24	-80						
06-FGC-3-1300	PFab 2-Line 3 - Instrument Tubing Installation	180	32	82.22%	03-Jun-24 A	31-Jan-25	12-Oct-24	12-Nov-24	-80						
Insulation															
06-FGC-3-1170	PFab 2-Line 3 - Insulation	60	31	48.33%	15-Jun-24 A	30-Jan-25	24-Nov-24	24-Dec-24	-37						
Precommissioning															
06-FGC-3-1180	PFab 2-Line 3 - Pre-commissioning	53	53	0%	07-Jan-25	28-Feb-25	02-Nov-24	24-Dec-24	-66						
PFab 2 - Line 4															
E&I Installation															
Electrical															
06-FGC-4-1250	PFab 2-Line 4 - Electrical Cable Pulling and Termination	180	32	82.22%	03-Jun-24 A	31-Jan-25	12-Oct-24	12-Nov-24	-80						
06-FGC-4-1260	PFab 2-Line 4 - Electrical Equipment Installation	180	32	82.22%	03-Jun-24 A	31-Jan-25	12-Oct-24	12-Nov-24	-80						
Instrument															
06-FGC-4-1280	PFab 2-Line 4 - Instrument Cable Pulling and Termination	180	32	82.22%	03-Jun-24 A	31-Jan-25	12-Oct-24	12-Nov-24	-80						
06-FGC-4-1290	PFab 2-Line 4 - Instrument Equipment Installation	180	32	82.22%	03-Jun-24 A	31-Jan-25	12-Oct-24	12-Nov-24	-80						
06-FGC-4-1300	PFab 2-Line 4 - Instrument Tubing Installation	180	32	82.22%	03-Jun-24 A	31-Jan-25	12-Oct-24	12-Nov-24	-80						
Insulation															
06-FGC-4-1010	PFab 2-Line 4 - Insulation	90	31	65.56%	15-Jun-24 A	30-Jan-25	24-Nov-24	24-Dec-24	-37						
Precommissioning															
06-FGC-4-1020	PFab 2-Line 4 - Pre-commissioning	53	53	0%	07-Jan-25	28-Feb-25	02-Nov-24	24-Dec-24	-66						
PFab 2 - Line 5															
E&I Installation															
Electrical															
06-FGC-5-1250	PFab 2-Line 5 - Electrical Cable Pulling and Termination	180	60	66.67%	01-Aug-24 A	28-Feb-25	15-Oct-24	13-Dec-24	-77						
06-FGC-5-1260	PFab 2-Line 5 - Electrical Equipment Installation	180	60	66.67%	01-Aug-24 A	28-Feb-25	15-Oct-24	13-Dec-24	-77						
Instrument															
06-FGC-5-1280	PFab 2-Line 5 - Instrument Cable Pulling and Termination	180	60	66.67%	01-Aug-24 A	28-Feb-25	15-Oct-24	13-Dec-24	-77						
06-FGC-5-1290	PFab 2-Line 5 - Instrument Equipment Installation	180	60	66.67%	01-Aug-24 A	28-Feb-25	15-Oct-24	13-Dec-24	-77						
06-FGC-5-1300	PFab 2-Line 5 - Instrument Tubing Installation	180	60	66.67%	01-Aug-24 A	28-Feb-25	15-Oct-24	13-Dec-24	-77						
Insulation															
06-FGC-5-1200	PFab 2-Line 5 - Insulation	736	60	91.85%	30-Jun-22 A	28-Feb-25	15-Oct-24	13-Dec-24	-77						
Precommissioning															
06-FGC-5-1210	PFab 2-Line 5 - Pre-commissioning	30	30	0%	13-Feb-25	14-Mar-25	28-Nov-24	27-Dec-24	-77						
PFab 2 - Line 6															
E&I Installation															
Electrical															
06-FGC-6-1260	PFab 2-Line 6 - Electrical Cable Pulling and Termination	180	60	66.67%	01-Aug-24 A	28-Feb-25	15-Oct-24	13-Dec-24	-77						
06-FGC-6-1270	PFab 2-Line 6 - Electrical Equipment Installation	180	60	66.67%	01-Aug-24 A	28-Feb-25	15-Oct-24	13-Dec-24	-77						
Instrument															
06-FGC-6-1290	PFab 2-Line 6 - Instrument Cable Pulling and Termination	180	60	66.67%	01-Aug-24 A	28-Feb-25	15-Oct-24	13-Dec-24	-77						
06-FGC-6-1300	PFab 2-Line 6 - Instrument Equipment Installation	180	60	66.67%	01-Aug-24 A	28-Feb-25	15-Oct-24	13-Dec-24	-77						
06-FGC-6-1310	PFab 2-Line 6 - Instrument Tubing Installation	180	60	66.67%	01-Aug-24 A	28-Feb-25	15-Oct-24	13-Dec-24	-77						
Insulation															
06-FGC-6-1020	PFab 2-Line 6 - Insulation	90	60	63.74%	23-Jun-24 A	28-Feb-25	15-Oct-24	13-Dec-24	-77						
Precommissioning															
06-FGC-6-1030	PFab 2-Line 6 - Pre-commissioning	13	13	0%	02-Mar-25	14-Mar-25	15-Dec-24	27-Dec-24	-77	Update Original Duration from 30d to 13d					
Procurement for ACC Units															
06-1150	Factory Acceptance Test (FAT) for ACC-3	16	16	70%	30-Mar-24 A	15-Jan-25	04-Aug-24	19-Aug-24	-149						
06-1190	Delivery to Site ACC-3	13	13	0%	19-Jan-25	31-Jan-25	23-Aug-24	04-Sep-24	-149	Update Original Duration from 44d to 13d					
Procurement for Mechanical Treatment Plant Building Plant Equipment															
06-1180	Delivery to Site	61	37	39.34%	01-May-24 A	05-Feb-25	28-Aug-24	03-Oct-24	-125						
Procurement for Wastewater Treatment Plant Equipment															
06-1220	Delivery to Site	90	16	82.22%	15-Jan-24 A	15-Jan-25	29-Oct-24	14-Nov-24	-63						
Procurement for HV Transformers and Associated Equipment															
Procurement of IS Limiter															
06-1270(7)	IS Limiter Design Approval (2.8.15.06.27)	120	24	80%	26-Sep-22 A	23-Jan-25	06-Aug-24	29-Aug-24	-147						
06-1280(7)	Manufacturing of IS Limiter	87	87	0%	24-Jan-25	20-Apr-25	30-Aug-24	24-Nov-24	-147	Update Duration from 118d to 87d					
Procurement for Onshore Crane at Berth															
06-1360	Material & Equipment Procurement	180	11	93.89%	01-Apr-24 A	10-Jan-25	11-Oct-24	21-Oct-24	-81						
06-1370	Factory Acceptance Test (FAT)	30	30	0%	11-Jan-25	09-Feb-25	22-Oct-24	20-Nov-24	-81						
06-1380	Delivery to Site	14	14	0%	10-Feb-25	23-Feb-25	21-Nov-24	04-Dec-24	-81						
Procurement for Soft Landscape Materials															
06-1790	Material Submission and Approval	60	60	0%	31-Dec-24	28-Feb-25	30-Jul-24	27-Sep-24	-154						
06-1800	Material Procurement & Nursery	170	170	0%	01-Mar-25	17-Aug-25	28-Sep-24	16-Mar-25	-154	Update Original Duration from 200d to 170d					
Procurement for Weighbridge System															
06-2240(1)	Delivery to Site (EIAC Equipment)	40	16	60%	29-Oct-24 A	15-Jan-25	13-Dec-24	28-Dec-24	-18						
Procurement for Truck Wash System															
06-2290(1)	Material Submission and Approval	60	60	0%	31-Dec-24	28-Feb-25	19-Sep-24	17-Nov-24	-103						
06-2300(1)	Material & Equipment Procurement	45	45	0%	01-Mar-25	14-Apr-25	18-Nov-24	01-Jan-25	-103						
06-2310(1)	Factory Acceptance Test (FAT)	45	45	0%	01-Mar-25	14-Apr-25	18-Nov-24	01-Jan-25	-103						
Procurement for Hard Landscape Materials (Paving, Greening, Furniture and Lighting)															
06-7000(6)	Material Submission and Approval	60	60	0%	20-Sep-23 A	28-Feb-25	07-Oct-24	05-Dec-24	-85	Update Actual Start Date					
06-7010(6)	Material Procurement	60	60	0%	01-Mar-25	29-Apr-25	06-Dec-24	03-Feb-25	-85						
Procurement for Curtain Wall Materials															
06-8200(6D)	Material Submission and Approval	60	18	70%	30-Apr-24 A	17-Jan-25	13-Oct-24	31-Oct-24	-78						
06-8210(6D)	Material & Equipment Procurement	90	56	37.78%	18-Oct-24 A	24-Feb-25	13-Oct-24	08-Dec-24	-78						

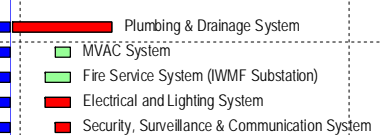
Activity ID	Activity Name	Original Duration	Remaining Duration	Activity % Complete	Current Start	Current Finish	Late Start	Late Finish	Total Float	M&S Remarks	2024									
											Dec 85	Jan 86	Feb 87	Mar 88						
06-8220(6D)	Factory Acceptance Test (FAT)	90	90	0%	31-Dec-24	30-Mar-25	13-Oct-24	11-Jan-25	-78											
06-8230(6D)	Delivery to Site	90	90	0%	30-Jan-25	29-Apr-25	12-Nov-24	10-Feb-25	-78											
Off-site Precasting of Facade Panels												769	97		14-Feb-23 A	06-Apr-25	21-Oct-24	07-Mar-25	-30	
06-8040(6D)	Procurement of Precast Concrete Wall Panel Moulding & Fabrication	205	46	77.56%	14-Feb-23 A	14-Feb-25	21-Oct-24	06-Dec-24	-70					Procurement of Precast Concrete Wall Panel Moulding & Fabrication						
Turbine Hall												30	8		08-Nov-24 A	07-Jan-25	04-Jan-25	11-Jan-25	4	
06-8150	Delivery to Site	30	8	73.33%	08-Nov-24 A	07-Jan-25	04-Jan-25	11-Jan-25	4					Delivery to Site						
Process Building												90	50		21-Oct-24 A	18-Feb-25	21-Oct-24	10-Dec-24	-70	
06-8160	Precasting of Concrete Panels	60	18	70%	21-Oct-24 A	17-Jan-25	21-Oct-24	08-Nov-24	-70					Precasting of Concrete Panels						
06-8170	Factory Acceptance Test (FAT)	60	35	41.67%	05-Nov-24 A	03-Feb-25	21-Oct-24	25-Nov-24	-70					Factory Acceptance Test (FAT)						
06-8180	Delivery to Site	60	50	16.67%	20-Nov-24 A	18-Feb-25	21-Oct-24	10-Dec-24	-70					Delivery to Site						
Mechanical Treatment Plant												60	60		31-Dec-24	28-Feb-25	26-Oct-24	24-Dec-24	-66	
06-8190	Precasting of Concrete Panels	37	37	0%	31-Dec-24	05-Feb-25	26-Oct-24	01-Dec-24	-66					Precasting of Concrete Panels						
06-8200	Factory Acceptance Test (FAT)	30	30	0%	15-Jan-25	13-Feb-25	10-Nov-24	09-Dec-24	-66					Factory Acceptance Test (FAT)						
06-8210	Delivery to Site	30	30	0%	30-Jan-25	28-Feb-25	25-Nov-24	24-Dec-24	-66					Delivery to Site						
Water Treatment Plant												45	45		31-Dec-24	13-Feb-25	10-Nov-24	24-Dec-24	-51	
06-8310(M82)	Precasting of Concrete Panels	37	37	0%	31-Dec-24	05-Feb-25	10-Nov-24	16-Dec-24	-51					Precasting of Concrete Panels						
06-8320(M82)	Factory Acceptance Test (FAT)	30	30	0%	15-Jan-25	13-Feb-25	25-Nov-24	24-Dec-24	-51					Factory Acceptance Test (FAT)						
06-8330(M82)	Delivery to Site	30	30	0%	15-Jan-25	13-Feb-25	25-Nov-24	24-Dec-24	-51					Delivery to Site						
Administration Building												35	35		15-Feb-25	21-Mar-25	10-Jan-25	13-Feb-25	-36	
06-8250	Precasting of Concrete Panels	21	21	0%	15-Feb-25	07-Mar-25	10-Jan-25	30-Jan-25	-36					Precasting of Concrete Panels						
06-8260	Factory Acceptance Test (FAT)	21	21	0%	22-Feb-25	14-Mar-25	17-Jan-25	06-Feb-25	-36					Factory Acceptance Test (FAT)						
06-8270	Delivery to Site	14	14	0%	08-Mar-25	21-Mar-25	31-Jan-25	13-Feb-25	-36					Delivery to Site						
Chimney												97	97		31-Dec-24	06-Apr-25	30-Nov-24	07-Mar-25	-30	
06-8280	Steel Claddings Fabrication	67	67	0%	31-Dec-24	07-Mar-25	30-Nov-24	05-Feb-25	-30					Steel Claddings Fabrication						
06-8290	Factory Acceptance Test (FAT)	60	60	0%	06-Feb-25	06-Apr-25	06-Jan-25	07-Mar-25	-30					Factory Acceptance Test (FAT)						
Environmental Works												365	154		01-Feb-24 A	02-Jun-25	24-Sep-24	24-Feb-25	-98	
Baseline Air Quality Monitoring Works												365	154		01-Feb-24 A	02-Jun-25	24-Sep-24	24-Feb-25	-98	
07-1220	Carry out baseline Air Quality monitoring at Portion 3 (Alternative Location)	365	154	57.81%	01-Feb-24 A	02-Jun-25	24-Sep-24	24-Feb-25	-98											
07-1240	Carry out baseline Air Quality monitoring at Portion 5	365	154	57.81%	01-Feb-24 A	02-Jun-25	24-Sep-24	24-Feb-25	-98											
Maritime Works												2019	161		30-Nov-19 A	09-Jun-25	14-Sep-24	27-Aug-25	79	
Marine Construction												2019	161		30-Nov-19 A	09-Jun-25	14-Sep-24	27-Aug-25	79	
Phase I - Construction of Perimeter Seawalls												2019	161		30-Nov-19 A	09-Jun-25	14-Sep-24	27-Aug-25	79	
Seawall and Berth at DCM Area												2019	161		30-Nov-19 A	09-Jun-25	14-Sep-24	11-Mar-25	-90	
Seawall Structural Works												2019	161		30-Nov-19 A	09-Jun-25	14-Sep-24	11-Mar-25	-90	
08-1115(3)	Caisson infill, Solid ballast, toe protection, precast concrete blocks ...etc Laying	250	8	96.68%	30-Nov-19 A	08-Jan-25	03-Nov-24	11-Nov-24	-57					Caisson infill, Solid ballast, toe protection, precast concrete blocks ...etc Laying						
Remain Works												1339	161		10-Oct-21 A	09-Jun-25	14-Sep-24	11-Mar-25	-90	
08-1120	Construction of Seawall and Wave Wall Extension from +3mPD to Deck Level for Seawall A	220	12	94.55%	10-Oct-21 A	11-Jan-25	31-Oct-24	11-Nov-24	-61					Construction of Seawall and Wave Wall Extension from +3mPD to Deck Level for Seawall A						
08-1120-1(6)	Construction of Seawall and Wave Wall Extension from +3mPD to Deck Level for Seawall B	220	4	98.31%	10-Oct-21 A	03-Jan-25	02-Oct-24	05-Oct-24	-90					Construction of Seawall and Wave Wall Extension from +3mPD to Deck Level for Seawall B						
08-1120-2(M55)	Construction of Seawall and Wave Wall Extension from +3mPD to Deck Level for Seawall B No. C1 & C2 (Caisson A2 & A3)	60	17	71.75%	28-Jun-23 A	16-Jan-25	19-Sep-24	05-Oct-24	-103					Construction of Seawall and Wave Wall Extension from +3mPD to Deck Level for Seawall B No. C1 & C2 (Caisson A2 & A3)						
08-1120-4(M55)	Construction of Seawall and Wave Wall Extension from +3mPD to Deck Level for Seawall B No. C73 & C734	60	20	66.51%	01-Dec-23 A	20-Jan-25	14-Sep-24	04-Oct-24	-108					Construction of Seawall and Wave Wall Extension from +3mPD to Deck Level for Seawall B No. C73 & C734						
08-1320(6)	Construction of Rear Wall Buttress & Panel for Seawall A	150	150	0%	10-Jan-25	09-Jun-25	13-Oct-24	11-Mar-25	-90											
Seawall at Dredging Area												160	7		20-Jan-23 A	07-Jan-25	20-Aug-25	27-Aug-25	233	
Remain Works												160	7		20-Jan-23 A	07-Jan-25	20-Aug-25	27-Aug-25	233	
08-1170	Construction of Seawall and Wave Wall Extension from +3mPD to Deck Level (Bay 1 to Bay 8)	160	7	95.5%	20-Jan-23 A	07-Jan-25	20-Aug-25	27-Aug-25	233					Construction of Seawall and Wave Wall Extension from +3mPD to Deck Level (Bay 1 to Bay 8)						
Phase II - Reclamation, Breakwater and Berth Construction												314	161		10-May-24 A	09-Jun-25	19-Oct-24	27-Aug-25	79	
Breakwater												120	120		09-Feb-25	09-Jun-25	30-Apr-25	27-Aug-25	79	
Remain Works												120	120		09-Feb-25	09-Jun-25	30-Apr-25	27-Aug-25	79	
08-1310(7)	Breakwater Profile Barrier and Pavement Road	120	120	0%	09-Feb-25	09-Jun-25	30-Apr-25	27-Aug-25	79											
Seawall and Berth at Marine Access												260	107		10-May-24 A	16-Apr-25	19-Oct-24	26-Jan-25	-80	
Remain Works												30	24		10-May-24 A	23-Jan-25	19-Oct-24	11-Nov-24	-73	
08-1330(2)	Construction of Seawall and Wave Wall Extension from +3mPD to Deck Level	30	24	20%	10-May-24 A	23-Jan-25	19-Oct-24	11-Nov-24	-73					Construction of Seawall and Wave Wall Extension from +3mPD to Deck Level						
Fire Boat Access												90	90		16-Jan-25	16-Apr-25	28-Oct-24	26-Jan-25	-80	
08-2500(6D)	Construction of Fire Boat Access	90	90	0%	16-Jan-25	16-Apr-25	28-Oct-24	26-Jan-25	-80											
Foundation Works												551	66		05-Aug-23 A	06-Mar-25	12-Aug-24	10-Feb-25	-24	
Sky Deck Foundation												82	28		23-Jun-24 A	28-Jan-25	12-Aug-24	09-Sep-24	-140	
Sky Deck Pile Caps Construction												82	28		23-Jun-24 A	28-Jan-25	12-Aug-24	09-Sep-24	-140	
09-2730(M62)	Excavation to Pile Cap Formation	21	14	32%	23-Jun-24 A	14-Jan-25	12-Aug-24	26-Aug-24	-140					Excavation to Pile Cap Formation						
09-2740(M62)	Pile Cut-off & Capping Plate (2 Welders @ 2nr/d)	21	12	41%	03-Jul-24 A	21-Jan-25	21-Aug-24	02-Sep-24	-140					Pile Cut-off & Capping Plate (2 Welders @ 2nr/d)						
09-2750(M62)	Pile Caps Construction	30	23	25%	27-Aug-24 A	28-Jan-25	18-Aug-24	09-Sep-24	-140					Pile Caps Construction						
Process Building - Waste Bunker & Tipping Hall Bld Foundation												26	2		05-Aug-23 A	02-Jan-25	01-Oct-24	03-Oct-24	-91	
Process Building Pile Cap Construction												26	2		05-Aug-23 A	02-Jan-25	01-Oct-24	03-Oct-24	-91	
Pile Cap Stage 3 (Module 3 Between Grid PB22 to PB32)												26	2		05-Aug-23 A	02-Jan-25	01-Oct-24	03-Oct-24	-91	
Process Building (Module 3) WWTP												26	2		05-Aug-23 A	02-Jan-25	01-Oct-24	03-Oct-24	-91	
09-1260	Pile Caps and Raft Foundation Construction (60m x 24m 4set@100m2/7day)	26	2	92.12%	05-Aug-23 A	02-Jan-25	01-Oct-24	03-Oct-24	-91					Pile Caps and Raft Foundation Construction (60m x 24m 4set@100m2/7day)						
ACC Equipment Foundation												22	22		31-Dec-24	21-Jan-25	28-Sep-24	19-Oct-24	-94	
ACC Pile Cap Construction												22	22		31-Dec-24	21-Jan-25	28-Sep-24	19-Oct-24	-94	
09-1720-1(M58)	On-grade Slab Construction Grid ACA-ACG, AC3-AC4	22	22	0%	31-Dec-24	21-Jan-25	28-Sep-24	19-Oct-24	-94					On-grade Slab Construction Grid ACA-ACG, AC3-AC4						
Reception Pavilion Foundation												30	30		20-Jan-25	19-Feb-25	12-Oct-24	10-Nov-24	-100	
09-2100	Formation, Compaction & Raft Foundation Construction	30	30	0%	20-Jan-25	19-Feb-25	12-Oct-24	10-Nov-24	-100					Formation, Compaction & Raft Foundation Construction						
Weighbridge Foundation												21	21		14-Feb-25	06-Mar-25	08-Dec-24	28-Dec-24	-68	
09-2710(6F)	Excavation & Construction of Weighbridge Bays and Cast-in bolts	21	21	0%	14-Feb-25	06-Mar-25	08-Dec-24	28-Dec-24	-68					Excavation & Construction of Weighbridge						

Activity ID	Activity Name	Original Duration	Remaining Duration	Activity % Complete	Current Start	Current Finish	Late Start	Late Finish	Total Float	M85 Remarks	2024			
											Dec 85	Jan 86	Feb 87	Mar 88
External Water Tank Foundations														
09-3050	Reuse Water Tanks and Water Cannon Water Tank Foundation (approx. 390m3)	21	15	30%	07-Dec-24 A	14-Jan-25	27-Jan-25	10-Feb-25	27	Change Relationship from Predecessor from FSO to FFO	Reuse Water Tanks and Water Cannon Water Tank Foundation (approx. 390m3)			
Superstructure Works														
Administration & Viewing Gallery Bld Structure														
10-1070	Roof Parapet and Dog House	21	21	0%	31-Dec-24	20-Jan-25	22-Nov-24	12-Dec-24	-39		Roof Parapet and Dog House			
10-1080(M63)	Facade Structural Frame Installation	65	65	0%	31-Dec-24	05-Mar-25	01-Dec-24	03-Feb-25	-30		Facade Structural Frame Installation			
Sky Deck Structure														
10-2310 (M55)	Construction of RC Column (16nr, 0.9m Dia x 11m, 3 pours @ 5d/pour with 4 formwork sets)	60	60	0%	13-Jan-25	14-Mar-25	26-Aug-24	24-Oct-24	-140		Construction of RC Column			
10-2315 (7)	Beam & Slab to Deck Level app.+18mPD (approx. 600m3)	30	30	0%	05-Mar-25	04-Apr-25	16-Oct-24	14-Nov-24	-140					
Process Building - Waste Bunker & Tipping Hall Bld Structure														
Waste & Ash Bunker Bld Structure														
Process Building (Module 3) Waste & Ash Bunker Bld Structure														
10-1410	Column & Wall to +53.7mPD	21	6	70%	06-Nov-24 A	06-Jan-25	23-Aug-24	29-Aug-24	-129		Column & Wall to +53.7mPD			
Process Building Waste & Ash Bunker Bld Structural Steel Roof														
10-2080-01(M81)	Module 2 Bunker Steel Roof Erection	40	37	8%	27-Dec-24 A	06-Feb-25	13-Oct-24	18-Nov-24	-80	Update Actual Start Date	Module 2 Bunker Steel Roof Erection			
10-2080-02(M81)	Module 3 Bunker Steel Roof Erection	40	40	0%	06-Feb-25	18-Mar-25	27-Dec-24	04-Feb-25	-42		Module 3 Bunker Steel Roof Erection			
10-2080-03(M85)	Module 1 Bunker Steel Roof Modification Works	30	30	0%	31-Dec-24	29-Jan-25	18-Sep-24	17-Oct-24	-104	New Activity	Module 1 Bunker Steel Roof Modification Works			
10-2220(7)	Module 1 Bunker Roof Cladding Installation	35	21	40%	30-Nov-24 A	19-Feb-25	18-Oct-24	07-Nov-24	-104	Changed remaining dur to 21d	Module 1 Bunker Roof Cladding Installation			
10-2220-1(M81)	Module 2 Bunker Roof Cladding Installation	30	30	0%	20-Feb-25	21-Mar-25	08-Nov-24	07-Dec-24	-104		Module 2 Bunker Roof Cladding Installation			
10-2220-2(M81)	Module 3 Bunker Roof Cladding Installation	30	30	0%	22-Mar-25	20-Apr-25	26-Jan-25	24-Feb-25	-55		Module 3 Bunker Roof Cladding Installation			
Process Building Waste & Ash Bunker Bld Structure Between Bunker 1 and 2														
10-2400 (M78)	Beam & Slab to +27.28mPD	12	1	90%	15-Aug-24 A	01-Jan-25	09-Aug-24	10-Aug-24	-143		Beam & Slab to +27.28mPD			
10-2410 (M78)	Beam & Slab to +11.58mPD and +12.4mPD	11	11	0%	31-Dec-24	10-Jan-25	08-Aug-24	19-Aug-24	-144		Beam & Slab to +11.58mPD and +12.4mPD			
10-2420 (M78)	Beam & Slab to +33.5mPD Grid Line PBA to PBG	9	9	0%	02-Jan-25	10-Jan-25	10-Aug-24	19-Aug-24	-144		Beam & Slab to +33.5mPD Grid Line PBA to PBG			
Process Building Waste & Ash Bunker Bld Structure Between Bunker 2 and 3														
10-2460 (M78)	Beam & Slab to +17.5mPD	14	1	90%	22-Aug-24 A	01-Jan-25	12-Aug-24	13-Aug-24	-141		Beam & Slab to +17.5mPD			
10-2470 (M78)	Beam & Slab to +27.28mPD	12	5	60%	28-Sep-24 A	06-Jan-25	20-Aug-24	25-Aug-24	-134		Beam & Slab to +27.28mPD			
10-2480 (M78)	Beam & Slab to +11.58mPD and +12.4mPD	11	11	0%	11-Jan-25	22-Jan-25	23-Aug-24	03-Sep-24	-141		Beam & Slab to +11.58mPD and +12.4mPD			
10-2490 (M78)	Beam & Slab to +33.5mPD Grid Line PBA to PBG	9	9	0%	13-Jan-25	22-Jan-25	25-Aug-24	03-Sep-24	-141		Beam & Slab to +33.5mPD Grid Line PBA to PBG			
Process Building Waste & Ash Bunker Bld Misc. Steel Structure														
10-2330 (M63)	Facade Structural Frame Installation at Module 1 (East & North Side)	30	26	12.5%	17-Nov-24 A	26-Jan-25	21-Oct-24	16-Nov-24	-70		Facade Structural Frame Installation at Module 1 (East & North Side)			
10-2340 (M63)	Facade Structural Frame Installation at Module 2 (North Side)	20	20	0%	26-Jan-25	15-Feb-25	27-Nov-24	16-Dec-24	-60		Facade Structural Frame Installation at Module 2 (North Side)			
10-2350 (M63)	Facade Structural Frame Installation at Module 3 (North & West Side)	30	30	0%	15-Feb-25	17-Mar-25	22-Dec-24	20-Jan-25	-55		Facade Structural Frame Installation at Module 3 (North & West Side)			
10-2360-1(M81)	Waste Crane Runway Beam at Module 1 (Including Rail Weld Inspection)	35	43	69%	14-Aug-24 A	11-Feb-25	18-Sep-24	30-Oct-24	-104		Waste Crane Runway Beam at Module 1 (Including Rail Weld Inspection)			
10-2360-2(M81)	Waste Crane Runway Beam at Module 2 (Including Rail Weld Inspection)	35	33	15%	19-Nov-24 A	01-Feb-25	13-Oct-24	14-Nov-24	-79		Waste Crane Runway Beam at Module 2 (Including Rail Weld Inspection)			
10-2360-3(M81)	Waste Crane Runway Beam at Module 3 (Including Rail Weld Inspection)	53	53	0%	02-Feb-25	26-Mar-25	27-Dec-24	17-Feb-25	-37		Waste Crane Runway Beam at Module 3 (Including Rail Weld Inspection)			
10-2360-5(M81)	Ash Crane Runway Beam at Module 2 (Including Rail Weld Inspection)	36	36	0%	31-Dec-24	04-Feb-25	20-Oct-24	24-Nov-24	-72		Ash Crane Runway Beam at Module 2 (Including Rail Weld Inspection)			
10-2360-6(M81)	Ash Crane Runway Beam at Module 3 (Including Rail Weld Inspection)	36	36	0%	05-Feb-25	12-Mar-25	25-Nov-24	30-Dec-24	-72		Ash Crane Runway Beam at Module 3 (Including Rail Weld Inspection)			
Process Building - Boiler & Flue Gas Treatment Bld Structure														
Steel Structure														
Boiler Building Steel Structure														
Process Building (Module 2) Steel Structure Erection														
10-1680	Roof Cladding Installation	60	76	56.33%	25-Oct-23 A	16-Mar-25	21-Sep-24	05-Dec-24	-101		Roof Cladding Installation			
Process Building (Module 3) Process Building Steel Structure Erection														
10-1720	Roof Cladding Installation	60	78	54%	12-Dec-23 A	18-Mar-25	19-Sep-24	05-Dec-24	-103		Roof Cladding Installation			
Process Building Internal Partition Wall and Staircase														
10-1850	RC Partition and Staircase at Module 1	90	73	19%	09-Nov-24 A	13-Mar-25	02-Aug-24	13-Oct-24	-151		RC Partition and Staircase at Module 1			
10-1860	RC Partition and Staircase at Module 2	69	69	0%	20-Jan-25*	29-Mar-25	18-Dec-24	24-Feb-25	-33		RC Partition and Staircase at Module 2			
10-1870	RC Partition and Staircase at Module 3	69	69	0%	20-Jan-25*	29-Mar-25	04-Nov-24	11-Jan-25	-77		RC Partition and Staircase at Module 3			
Chimney Structure														
10-2060-1	Chimney Roof Slab (47th Pour)	40	40	0%	12-Feb-25	23-Mar-25	21-Mar-25	29-Apr-25	37		Chimney Roof Slab (47th Pour)			
Mechanical Treatment Plant Bld Structure														
10-2095	Column & Wall to +13.5mPD	21	3	84%	08-May-24 A	03-Jan-25	31-Aug-24	03-Sep-24	-121		Column & Wall to +13.5mPD			
10-2096	1/F Slab @+13.5mPD	21	1	97%	05-Aug-24 A	03-Jan-25	03-Sep-24	03-Sep-24	-121		1/F Slab @+13.5mPD			
10-2100	Column & Wall to +17.5mPD	21	2	90%	25-Aug-24 A	03-Jan-25	01-Sep-24	03-Sep-24	-121		Column & Wall to +17.5mPD			
10-2110	2/F Slab @+17.5mPD	21	4	83%	30-Sep-24 A	03-Jan-25	17-Oct-24	20-Oct-24	-75		2/F Slab @+17.5mPD			
10-2120	Column & Wall to +23.0mPD	21	12	43%	27-Nov-24 A	11-Jan-25	09-Oct-24	20-Oct-24	-83		Column & Wall to +23.0mPD			
10-2130	3/F Slab @+23.0mPD	21	17	21%	04-Dec-24 A	16-Jan-25	04-Oct-24	20-Oct-24	-88	Update Actual Start Date: Change Relationship from Predecessor 10-2120 from FSO to FFO	3/F Slab @+23.0mPD			
10-2140	Column & Wall to +27.28mPD	21	21	0%	16-Jan-25	06-Feb-25	21-Oct-24	10-Nov-24	-88		Column & Wall to +27.28mPD			
10-2150	Roof Slab @+27.28mPD	21	21	0%	06-Feb-25	27-Feb-25	11-Nov-24	01-Dec-24	-88		Roof Slab @+27.28mPD			
10-2160	Roof Parapet Wall	21	21	0%	27-Feb-25	20-Mar-25	04-Dec-24	24-Dec-24	-86		Roof Parapet Wall			
Elevated Drive Way and Associated Structures														
Elevated Drive Way RSA to RSG (FS Control Rm & Vehicle Washing Facility)														
10-2250(M57)	Wall & Column to +17.5 Ramp Level	30	3	90%	12-Oct-24 A	02-Jan-25	10-Sep-24	13-Sep-24	-111		Wall & Column to +17.5 Ramp Level			
10-2260(M57)	Beam & Slab to +17.5 Ramp Level	21	4	80%	15-Nov-24 A	07-Jan-25	13-Sep-24	17-Sep-24	-111		Beam & Slab to +17.5 Ramp Level			
10-2270(M57)	Truck Washing Facility House Column and Roof Slab to +28mPD	90	90	0%	22-Jan-25	22-Apr-25	27-Oct-24	24-Jan-25	-87		Truck Washing Facility House Column and Roof Slab to +28mPD			
10-2300(M57)	Parapet Wall	30	15	50%	14-Dec-24 A	14-Jan-25	14-Jun-25	28-Jun-25	165		Parapet Wall			
Elevated Drive Way RSG to RSX (Transform Room)														
10-2320(M57)	Wall & Column to +12.5mPD Mezzanine Level	21	7	65%	22-Sep-24 A	07-Jan-25	03-Oct-24	10-Oct-24	-88	Remove Actual Finish Date	Wall & Column to +12.5mPD Mezzanine Level			
10-2330(M57)	Beam & Slab to +12.5mPD Mezzanine Level	21	8	60%	13-Oct-24 A	08-Jan-25	03-Oct-24	11-Oct-24	-88		Beam & Slab to +12.5mPD Mezzanine Level			

Activity ID	Activity Name	Original Duration	Remaining Duration	Activity % Complete	Current Start	Current Finish	Late Start	Late Finish	Total Float	M85 Remarks	2024				2025				
											Dec 85	Jan 86	Feb 87	Mar 88	Jan 86	Feb 87	Mar 88	Apr 89	
10-2340(M57)	Wall & Column to +17.5 Ramp Level	21	15	30%	19-Nov-24 A	14-Jan-25	27-Sep-24	11-Oct-24	-95										
10-2350(M57)	Beam & Slab to +17.5 Ramp Level	21	15	30%	21-Nov-24 A	14-Jan-25	27-Sep-24	11-Oct-24	-95										
Elevated Drive Way RSX to RSAB		56	56		31-Dec-24	24-Feb-25	06-Oct-24	30-Nov-24	-86										
10-2420(M81)	Wall & Column to +12.5mPD Mezzanine Level	14	14	0%	31-Dec-24	13-Jan-25	06-Oct-24	19-Oct-24	-86										
10-2430(M81)	Beam & Slab to +12.5mPD Mezzanine Level	14	14	0%	14-Jan-25	27-Jan-25	20-Oct-24	02-Nov-24	-86										
10-2440(M81)	Wall & Column to +17.5 Ramp Level	14	14	0%	28-Jan-25	10-Feb-25	03-Nov-24	16-Nov-24	-86										
10-2450(M81)	Beam & Slab to +17.5 Ramp Level	14	14	0%	11-Feb-25	24-Feb-25	17-Nov-24	30-Nov-24	-86										
Elevated Drive Way RSAB to RSAF		112	30		15-Apr-24 A	29-Jan-25	03-Oct-24	09-Nov-24	-81										
10-2360(M57)	G/F Base Slab	45	5	90%	15-Apr-24 A	04-Jan-25	03-Oct-24	08-Oct-24	-88										
10-2370(M57)	Wall & Column to +13mPD Mezzanine Level	45	6	86.67%	20-Apr-24 A	05-Jan-25	04-Nov-24	09-Nov-24	-57										
10-2380(M57)	Beam & Slab to +13mPD Mezzanine Level	30	21	30%	10-May-24 A	20-Jan-25	20-Oct-24	09-Nov-24	-72										
10-2390(M57)	Wall & Column to +17.5 Ramp Level	30	21	30%	17-May-24 A	20-Jan-25	20-Oct-24	09-Nov-24	-72										
10-2400(M57)	Beam & Slab to +17.5 Ramp Level	30	30	0%	20-May-24 A	29-Jan-25	11-Oct-24	09-Nov-24	-81										
Reception Pavilion Structure		63	63		19-Feb-25	23-Apr-25	11-Nov-24	12-Jan-25	-100										
10-2280	Reception Pavilion RC Structure Construction	30	30	0%	19-Feb-25	21-Mar-25	11-Nov-24	10-Dec-24	-100										
10-2290	Roof	30	30	0%	24-Mar-25	23-Apr-25	14-Dec-24	12-Jan-25	-100										
Vehicle Fuel Filling Station		30	30		24-Jan-25	22-Feb-25	10-Oct-24	08-Nov-24	-106										
10-2450(6D)	Filling Station Structure Construction	30	30	0%	24-Jan-25	22-Feb-25	10-Oct-24	08-Nov-24	-106	Changed relation with successor 03-3860 to FS+0d									
Vessel Offloading Point		74	74		20-Jan-25	03-Apr-25	04-Oct-24	16-Dec-24	-108										
08-2420(7)	Vehicle Ferry Ramp Installation	74	74	0%	20-Jan-25	03-Apr-25	04-Oct-24	16-Dec-24	-108										
Weighbridge Kiosk		30	30		15-Jan-25	13-Feb-25	29-Oct-24	27-Nov-24	-78										
08-2430(M79)	Construction of Weighbridge Kiosk	30	30	0%	15-Jan-25*	13-Feb-25	29-Oct-24	27-Nov-24	-78										
ACC Yard		321	107		31-Mar-24 A	16-Apr-25	21-Aug-24	18-Nov-24	-149										
13-2000	Delivery and Erection of ACC Steel Structure & Steel Structure Support of Condensate Tank (Module 1)	90	15	83.33%	31-Mar-24 A	14-Jan-25	21-Aug-24	04-Sep-24	-132										
13-2040	Delivery and Erection of ACC Steel Structure & Steel Structure Support of Condensate Tank (Module 2)	90	86	5%	24-Oct-24 A	26-Mar-25	21-Aug-24	14-Nov-24	-132										
13-2080	Delivery and Erection of ACC Steel Structure & Steel Structure Support of Condensate Tank (Module 3)	90	90	0%	17-Jan-25	16-Apr-25	21-Aug-24	18-Nov-24	-149										
Misc. External Structures		76	60		15-Nov-24 A	28-Feb-25	06-Oct-24	27-Mar-25	27										
10-2440	Water Cannon Water Tank Erection & pipe connection to Pump Room	45	45	0%	14-Jan-25	28-Feb-25	11-Feb-25	27-Mar-25	27										
10-2450	Seawater Intake Structure RC Works above +6.5mPD	30	26	13.33%	15-Nov-24 A	25-Jan-25	06-Oct-24	31-Oct-24	-86										
10-2460	Seawater Intake Structure Steel Roof Erection	30	30	0%	26-Jan-25	24-Feb-25	14-Nov-24	13-Dec-24	-73										
Architectural Builders Works & Finishes		522	244		27-Sep-23 A	31-Aug-25	30-Jul-24	28-Jun-25	-64										
Administration & Viewing Gallery Bld ABWF Works		186	186		30-Jan-25	03-Aug-25	31-Dec-24	28-Jun-25	-36										
11-1020	Metal Railings, Platforms and Misc. Metal Works Installations	150	150	0%	07-Mar-25	03-Aug-25	30-Jan-25	28-Jun-25	-36										
11-1030	Internal Wall and Floor Finishes	150	150	0%	30-Jan-25	28-Jun-25	31-Dec-24	29-May-25	-30										
11-1050-1(M63)	Facade Panels Erection (130pcs. @4pc/day)	33	33	0%	22-Mar-25	23-Apr-25	14-Feb-25	18-Mar-25	-36										
Process Building - Waste Bunker & Tipping Hall Bld ABWF Works		455	178		20-Nov-23 A	27-Jun-25	14-Sep-24	09-Jun-25	-17										
11-1060	Door, Roller Shutter, Windows and Louvers Installation	180	178	1%	02-Nov-24 A	27-Jun-25	13-Dec-24	09-Jun-25	-17										
11-1070	Metal Railings, Platforms, Gratings, Cable trench covers Installations	90	90	0%	31-Dec-24	30-Mar-25	12-Mar-25	09-Jun-25	71										
11-1080	Internal Wall and Floor Finishes	230	164	28.7%	20-Nov-23 A	12-Jun-25	14-Sep-24	24-Feb-25	-108										
11-1090	False ceiling and Raise Floor installation (in CCR)	45	23	50%	17-Dec-24 A	22-Jan-25	24-Sep-24	16-Oct-24	-98	Update Actual Start Date									
11-1100	External Finishes, Curtain Walls and Roof Waterproofing	90	26	71%	20-Feb-24 A	26-Jan-25	10-Nov-24	06-Dec-24	-50										
11-1530(M63)	Facade Panels Erection for Module 1 (612pcs. @8pcs/d)	51	50	1%	27-Nov-24 A	19-Feb-25	21-Oct-24	10-Dec-24	-70										
11-1540(M63)	Facade Panels Erection for Module 2 (284pcs. @8pcs/d)	25	25	0%	19-Feb-25	16-Mar-25	11-Dec-24	04-Jan-25	-70										
11-1550(M63)	Facade Panels Erection for Module 3 (612pcs. @8pcs/d)	51	51	0%	16-Mar-25	06-May-25	05-Jan-25	24-Feb-25	-70										
Process Building - Boiler & Flue Gas Bld ABWF Works		338	244		01-Aug-24 A	31-Aug-25	29-Oct-24	09-Jun-25	-83										
11-1110	Door, Roller Shutter, Windows and Louvers Installation	180	171	5%	21-Oct-24 A	31-Aug-25	21-Dec-24	09-Jun-25	-83										
11-1120	Metal Railings, Staircase, Platforms & Gratings Installations	200	200	0%	16-Jan-25	03-Aug-25	22-Nov-24	09-Jun-25	-55										
11-1130	Internal Wall and Floor Finishes	180	101	43.89%	01-Aug-24 A	10-Apr-25	04-Dec-24	14-Mar-25	-27										
11-1140	External Finishes, Curtain Walls and Roof Waterproofing	90	89	1%	20-Dec-24 A	14-May-25	27-Nov-24	24-Feb-25	-78	Update Actual Start Date									
11-1530 (M63)	Facade Panels Erection for Module 1 (658pcs. @8pcs/d)	83	74	10.7%	27-Dec-24 A	15-Mar-25	29-Oct-24	11-Jan-25	-62	Update Actual Start Date: Change Relationship from Predecessor 06-8150 from FS0 to FF0									
11-1540 (M63)	Facade Panels Erection for Module 2 (344pcs. @4pcs/d)	86	86	0%	05-Mar-25	30-May-25	02-Jan-25	28-Mar-25	-62										
Turbine Hall Bld ABWF Works		387	142		09-Dec-23 A	21-May-25	30-Jul-24	28-Jun-25	39										
Electrical Bld ABWF Works		350	105		09-Dec-23 A	14-Apr-25	29-Aug-24	28-Jun-25	75										
11-1150	Door, Windows and Louvers Installation	50	45	5%	05-Dec-24 A	13-Feb-25	29-Aug-24	12-Oct-24	-124										
11-1160	Metal Railings, Platforms, Gratings, Cable trench covers Installations	90	16	81.78%	15-Apr-24 A	16-Jan-25	11-Sep-24	27-Sep-24	-110										
11-1170	Internal Wall and Floor Finishes	90	5	95%	09-Dec-23 A	04-Jan-25	23-Sep-24	27-Sep-24	-99										
11-1180	False ceiling and Raise Floor installation	40	40	0%	31-Dec-24	08-Feb-25	03-Sep-24	12-Oct-24	-119	Update Original Duration from 50d to 40d									
11-1190	Roof Waterproofing	60	60	0%	14-Feb-25	14-Apr-25	30-Apr-25	28-Jun-25	75										
11-1540	Facade Panels Erection (167pcs. @8pcs/d)	23	20	14%	27-Sep-24 A	19-Jan-25	08-Sep-24	27-Sep-24	-114										
Turbine Hall ABWF Works		203	142		30-Sep-24 A	21-May-25	30-Jul-24	28-Jun-25	39										
11-1200	Door, Roller Shutter, Windows and Louvers Installation	60	60	0%	21-Jan-25	22-Mar-25	15-Dec-24	12-Feb-25	-38										
11-1210	Metal Railings, Platforms, Gratings, Cable trench covers Installations	60	60	0%	31-Dec-24	28-Feb-25	30-Jul-24	27-Sep-24	-154										
11-1220	Internal Wall and Floor Finishes for remain area	60	60	0%	31-Dec-24	28-Feb-25	16-Oct-24	14-Dec-24	-76										
11-1240	Roof Waterproofing	60	60	0%	22-Mar-25	21-May-25	30-Apr-25	28-Jun-25	39										
11-1540-1(M63)	Facade Structural Frame Erection	22	17	25%	30-Sep-24 A	16-Jan-25	11-Sep-24	27-Sep-24	-111										
11-1550	Facade Panels Erection (207pcs. @4pcs/d)	51	51	0%	16-Jan-25	08-Mar-25	10-Dec-24	29-Jan-25	-38										
Compressor & CCCW Bld ABWF Works		90	90		31-Dec-24	30-Mar-25	12-Mar-25	28-Jun-25	90										
11-1250	Door, Roller Shutter, Windows and Louvers Installation	90	90	0%	31-Dec-24	30-Mar-25	12-Mar-25	09-Jun-25	71										
11-1260	Metal Railings, Platforms, Gratings, Cable trench covers Installations	90	90	0%	31-Dec														

Activity ID	Activity Name	Original Duration	Remaining Duration	Activity % Complete	Current Start	Current Finish	Late Start	Late Finish	Total Float	M&S Remarks	2024			
											Dec 85	Jan 86	Feb 87	Mar 88
11-1290	External Finishes and Roof Waterproofing	90	90	0%	31-Dec-24	30-Mar-25	31-Mar-25	28-Jun-25	90					
Chimney ABWF Works														
10-2240	Erection of Steel Grating Platform	55	17	70%	23-Sep-24 A	16-Jan-25	15-Sep-24	01-Oct-24	-107					
11-1000	Installation of Metal Staircase, Railings, Lift Shaft	26	26	0%	17-Jan-25	11-Feb-25	24-Nov-24	19-Dec-24	-54					
11-1490	Door and Windows Installation	60	60	0%	31-Dec-24	28-Feb-25	21-Oct-24	19-Dec-24	-71					
11-1500	Internal Wall and Floor Finishes	30	30	0%	17-Jan-25	15-Feb-25	02-Oct-24	31-Oct-24	-107					
Mechanical Treatment Plant & Water Treatment Plant Bld ABWF Works														
Mechanical Treatment Plant ABWF Works														
11-1310	Metal Railings, Platforms, Gratings, Cable trench covers Installations	120	120	0%	02-Feb-25	02-Jun-25	25-Nov-24	24-Mar-25	-69					
11-1320	Internal Wall and Floor Finishes	120	120	0%	02-Feb-25	02-Jun-25	11-Nov-24	10-Mar-25	-83					
11-1330	External Finishes, Curtain Walls and Roof Waterproofing	90	90	0%	02-Feb-25	03-May-25	25-Dec-24	24-Mar-25	-40					
11-1330-1(M63)	Facade Structural Frame Erection	136	136	0%	02-Feb-25	18-Jun-25	10-Oct-24	22-Feb-25	-115					
Water Treatment Plant ABWF Works														
11-1600(7)	Door, Roller Shutter, Windows and Louvers Installation	60	60	0%	06-Feb-25	06-Apr-25	27-Nov-24	25-Jan-25	-71					
11-1610(7)	Metal Railings, Platforms, Gratings, Cable trench covers Installations	90	90	0%	31-Dec-24	30-Mar-25	28-Oct-24	25-Jan-25	-64					
11-1620(7)	Internal Wall and Floor Finishes	90	90	0%	03-Jan-25	03-Apr-25	28-Oct-24	25-Jan-25	-68					
11-1630(7)	External Finishes, and Roof Waterproofing	90	90	0%	11-Jan-25	11-Apr-25	28-Oct-24	25-Jan-25	-76					
11-1640(7)	Facade Structural Frame Erection	90	90	0%	31-Dec-24	30-Mar-25	21-Oct-24	18-Jan-25	-71					
11-1650(7)	Facade Panels Erection (272pcs. @8pcs/d)	60	60	0%	06-Feb-25	06-Apr-25	27-Nov-24	25-Jan-25	-71					
IWMF Substation ABWF Works														
11-1340	Door, Roller Shutter, Windows and Louvers Installation	60	17	71.67%	18-Dec-23 A	16-Jan-25	07-Dec-24	23-Dec-24	-24					
11-1350	Metal Railings, Platforms, Gratings, Cable trench covers Installations	90	15	83.33%	27-Dec-23 A	14-Jan-25	14-Jun-25	28-Jun-25	165					
11-1360	Internal Wall and Floor Finishes	90	5	95%	27-Sep-23 A	04-Jan-25	27-Aug-24	31-Aug-24	-126					
11-1380	External Finishes and Roof Waterproofing	86	19	77.33%	06-May-24 A	19-Jan-25	09-Jun-25	28-Jun-25	161					
Elevated Drive Way and Associated Structures ABWF Works														
11-1430	External Finishes and Roof Waterproofing	132	132	0%	21-Jan-25	02-Jun-25	29-Jan-25	09-Jun-25	7					
Elevated Drive Way RSA to RSG														
11-1390	Door, Roller Shutter, Windows and Louvers Installation	30	30	0%	28-Jan-25	27-Feb-25	12-Mar-25	10-Apr-25	43					
11-1400	Metal Railings, Platforms, Gratings, Cable trench covers Installations	60	60	0%	27-Jan-25	28-Mar-25	08-Oct-24	06-Dec-24	-111					
11-1410	Internal Wall and Floor Finishes	60	60	0%	21-Jan-25	22-Mar-25	02-Oct-24	30-Nov-24	-112					
11-1420	False ceiling and Raise Floor installation	60	60	0%	04-Feb-25	05-Apr-25	11-Apr-25	09-Jun-25	65					
Elevated Drive Way RSG to RSU														
11-1390-1(M76)	Door, Roller Shutter, Windows and Louvers Installation	30	30	0%	04-Feb-25	06-Mar-25	11-May-25	09-Jun-25	95					
11-1400-1(M76)	Metal Railings, Platforms, Gratings, Cable trench covers Installations	60	60	0%	04-Feb-25	05-Apr-25	30-Apr-25	28-Jun-25	84					
11-1410-1(M76)	Internal Wall and Floor Finishes	60	60	0%	21-Jan-25	22-Mar-25	19-Oct-24	17-Dec-24	-95					
11-1420-1(M76)	False ceiling and Raise Floor installation	60	60	0%	04-Feb-25	05-Apr-25	30-Apr-25	28-Jun-25	84					
Elevated Drive Way RSU to RSAF														
11-1390-2(M76)	Door, Roller Shutter, Windows and Louvers Installation	30	30	0%	25-Feb-25	26-Mar-25	11-May-25	09-Jun-25	75					
11-1400-2(M76)	Metal Railings, Platforms, Gratings, Cable trench covers Installations	60	60	0%	25-Feb-25	25-Apr-25	30-Apr-25	28-Jun-25	64					
11-1410-2(M76)	Internal Wall and Floor Finishes	60	60	0%	25-Feb-25	25-Apr-25	01-Dec-24	29-Jan-25	-86					
11-1420-2(M76)	False ceiling and Raise Floor installation	60	60	0%	11-Mar-25	09-May-25	30-Apr-25	28-Jun-25	50					
Seawater Intake Chamber ABWF Works														
11-1670(7)	Floor, wall and ceiling finishes	30	30	0%	26-Jan-25	24-Feb-25	01-Nov-24	30-Nov-24	-86					
11-1680(7)	Steel platforms, metal covers, cat ladder and staircase	30	30	0%	18-Feb-25	19-Mar-25	29-Nov-24	28-Dec-24	-81					
11-1690(7)	Roller Shutter installation	30	30	0%	18-Feb-25	19-Mar-25	22-Dec-24	20-Jan-25	-58					
Building Services Installation														
Administration & Viewing Gallery Bld BS Works														
12-1000	Plumbing & Drainage System	120	72	40%	21-Oct-24 A	04-Apr-25	15-Feb-25	27-Apr-25	23					
12-1010	MVAC System	120	120	0%	31-Dec-24	29-Apr-25	14-Dec-24	12-Apr-25	-17					
12-1020	Fire Service System (Admin building)	120	54	55%	15-Sep-24 A	05-Mar-25	02-Feb-25	27-Mar-25	22					
12-1030	Electrical and Lighting System	150	107	29%	15-Sep-24 A	16-Apr-25	29-Dec-24	14-Apr-25	-2					
12-1040	CCTV & Surveillance System	150	75	50%	05-Nov-24 A	15-Mar-25	12-Feb-25	27-Apr-25	43					
12-1050	FS Lift & Escalator Installation	60	60	0%	01-Mar-25	29-Apr-25	13-Dec-24	10-Feb-25	-78					
Process Building - Waste Bunker & Tipping Hall Bld BS Works														
12-1060	Plumbing & Drainage System	180	113	37%	11-Oct-23 A	23-Apr-25	04-Jan-25	27-Apr-25	5					
12-1070	MVAC & OCS System	120	77	36%	14-Oct-23 A	17-Mar-25	27-Sep-24	12-Dec-24	-95					
12-1080	Fire Service System (Waste Bunker and Tipping Hall)	180	101	44%	11-Oct-23 A	10-Apr-25	17-Dec-24	27-Mar-25	-14					
12-1090	Electrical and Lighting System	180	122	32%	18-Oct-23 A	02-May-25	23-Sep-24	23-Jan-25	-99					
12-1100	Security, Surveillance & Communication System	180	99	45%	25-Apr-24 A	08-Apr-25	23-Sep-24	30-Dec-24	-99					
Process Building - Boiler & Flue Gas Bld BS Works														
12-1110	Plumbing & Drainage System	180	60	66.67%	11-Oct-23 A	28-Feb-25	08-Nov-24	06-Jan-25	-53					
12-1120	MVAC System	180	153	15%	14-Oct-23 A	01-Jun-25	11-Nov-24	12-Apr-25	-50					
12-1130	Fire Service System (Boiler & Flue Gas Bld)	180	99	45%	11-Oct-23 A	08-Apr-25	19-Dec-24	27-Mar-25	-12					
12-1140	Electrical and Lighting System	180	105	41.67%	18-Oct-23 A	17-Apr-25	22-Sep-24	04-Jan-25	-103					
12-1150	Security, Surveillance & Communication System	180	101	43.89%	25-Apr-24 A	10-Apr-25	21-Sep-24	30-Dec-24	-101					
12-1160	FS Lift & Escalator Installation (Boiler & Flue Gas Bld)	120	120	0%	13-Mar-25	11-Jul-25	14-Oct-24	10-Feb-25	-151					
12-1580(6E)	Earthing and Lightning Protection System	180	142	21.11%	20-May-22 A	24-May-25	22-Sep-24	10-Feb-25	-103					
Turbine Hall Bld BS Works														
Electrical Bld BS Works														
12-1270	Plumbing & Drainage System	60	32	46%	11-Oct-23 A	01-Feb-25	17-Dec-24	27-Mar-25	55					
12-1280	MVAC System	120	18	85%	25-Feb-24 A	17-Jan-25	17-Dec-24	04-Jan-25	-14					
12-1290	Fire Service System (Electrical Building)	120	30	75%	31-Mar-24 A	29-Jan-25	26-Feb-25	27-Mar-25	57					
12-1300	Electrical and Lighting System	120	25	79%	11-Oct-23 A	25-Jan-25	17-Dec-24	11-Jan-25	-14					

Activity ID	Activity Name	Original Duration	Remaining Duration	Activity % Complete	Current Start	Current Finish	Late Start	Late Finish	Total Float	M85 Remarks	2024		2025		
											Dec 85	Jan 86	Feb 87	Mar 88	
12-1310	Security, Surveillance & Communication System	90	14	85%	25-Feb-24 A	13-Jan-25	17-Dec-24	30-Dec-24	-14						
Turbine Hall BS Works															
12-1320	Plumbing & Drainage System	90	28	68.89%	11-Oct-23 A	27-Jan-25	04-Oct-24	31-Oct-24	-88						
12-1330	MVAC System	60	12	80%	31-May-24 A	11-Jan-25	04-Oct-24	15-Oct-24	-88						
12-1340	Fire Service System (Turbine Hall)	90	36	60%	31-May-24 A	04-Feb-25	19-Nov-24	25-Dec-24	-42						
12-1350	Electrical and Lighting System	90	28	68.89%	11-Oct-23 A	27-Jan-25	19-Nov-24	16-Dec-24	-42						
12-1360	Security, Surveillance & Communication System	90	90	0%	31-Dec-24	30-Mar-25	02-Oct-24	30-Dec-24	-90						
Compressor & CCCW Bid BS Works															
12-1370	Plumbing & Drainage System	60	3	95%	31-Mar-24 A	02-Jan-25	04-Jan-25	06-Jan-25	4						
12-1380	MVAC System	120	6	95%	15-May-24 A	05-Jan-25	07-Apr-25	12-Apr-25	97						
12-1390	Fire Service System (CCCW Bid)	120	18	85%	27-Apr-24 A	17-Jan-25	10-Mar-25	27-Mar-25	69						
12-1400	Electrical and Lighting System	120	60	50%	20-Mar-24 A	28-Feb-25	26-Dec-24	24-Feb-25	-5						
12-1410	Security, Surveillance & Communication System	90	5	95%	20-Mar-24 A	04-Jan-25	26-Dec-24	30-Dec-24	-5						
Chimney BS Works															
12-1520	Plumbing & Drainage System	14	14	0%	16-Feb-25	01-Mar-25	06-Dec-24	19-Dec-24	-72						
12-1530	MVAC System	60	60	0%	16-Feb-25	16-Apr-25	12-Feb-25	12-Apr-25	-4						
12-1540	Fire Service System (Chimney)	60	60	0%	16-Feb-25	16-Apr-25	27-Jan-25	27-Mar-25	-20						
12-1550	Electrical and Lighting System	60	60	0%	16-Feb-25	16-Apr-25	14-Feb-25	14-Apr-25	-2						
12-1560	Security, Surveillance & Communication System	60	60	0%	16-Feb-25	16-Apr-25	01-Nov-24	30-Dec-24	-107						
12-1570	Lift Installation (Chimney)	60	60	0%	01-Mar-25	29-Apr-25	13-Dec-24	10-Feb-25	-78						
Mechanical Treatment Plant & Water Treatment Plant Bid BS Works															
Mechanical Treatment BS Works															
12-1420	Plumbing & Drainage System	65	65	0%	24-Jan-25	29-Mar-25	15-Oct-24	18-Dec-24	-101						
12-1430	MVAC & OCS System	59	59	0%	24-Jan-25	24-Mar-25	15-Oct-24	12-Dec-24	-101						
12-1440	Fire Service System	77	77	0%	24-Jan-25	11-Apr-25	10-Jan-25	27-Mar-25	-14						
12-1450	Electrical and Lighting System	120	120	0%	02-Feb-25	02-Jun-25	16-Dec-24	14-Apr-25	-48						
12-1460	Security, Surveillance & Communication System	90	90	0%	03-Jan-25	03-Apr-25	02-Oct-24	30-Dec-24	-93						
12-1460-1(6C)	Lift Installation	60	60	0%	01-Mar-25	29-Apr-25	13-Dec-24	10-Feb-25	-78						
Water Treatment Plant BS Works															
12-1580(7)	Plumbing & Drainage System	120	66	45%	30-Jun-24 A	06-Mar-25	29-Oct-24	03-Jan-25	-62						
12-1590(7)	MVAC & OCS System	120	44	63%	27-Jul-24 A	13-Feb-25	29-Oct-24	12-Dec-24	-62						
12-1600(7)	Fire Service System	107	52	51%	28-Jul-24 A	21-Feb-25	03-Feb-25	27-Mar-25	35						
12-1610(7)	Electrical and Lighting System	120	58	52%	15-Aug-24 A	26-Feb-25	27-Nov-24	24-Jan-25	-33						
12-1620(7)	Security, Surveillance & Communication System	90	33	63%	30-Jul-24 A	02-Feb-25	27-Nov-24	30-Dec-24	-33						
IWMF Substation BS Works															
12-1470	Plumbing & Drainage System	90	10	89%	10-Oct-23 A	09-Jan-25	29-Dec-24	08-Jan-25	-2						
12-1480	MVAC System	90	2	98%	11-Oct-23 A	05-Jan-25	11-Apr-25	12-Apr-25	97						
12-1490	Fire Service System (IWMF Substation)	90	3	97%	12-Oct-23 A	05-Jan-25	25-Mar-25	27-Mar-25	81						
12-1500	Electrical and Lighting System	90	3	97%	10-Oct-23 A	05-Jan-25	29-Dec-24	31-Dec-24	-5						
12-1510	Security, Surveillance & Communication System	90	2	98%	20-Nov-23 A	05-Jan-25	29-Dec-24	30-Dec-24	-6						
Elevated Drive Way and Associated Structures Bid BS Works															
Elevated Drive Way RSA to RSG															
12-1170	Plumbing & Drainage System	60	58	3%	15-Sep-24 A	21-Apr-25	01-Nov-24	14-Apr-25	-7						
12-1180	MVAC System	60	60	0%	20-Feb-25	21-Apr-25	12-Feb-25	12-Apr-25	-9						
12-1190	Fire Service System (Elevated Driveway)	60	58	3%	15-Sep-24 A	21-Apr-25	28-Jan-25	27-Mar-25	-25						
12-1200	Electrical and Lighting System	60	60	0%	20-Feb-25	21-Apr-25	14-Feb-25	14-Apr-25	-7						
12-1210	CCTV & Surveillance System	60	60	0%	20-Feb-25	21-Apr-25	01-Nov-24	30-Dec-24	-112						
Elevated Drive Way RSG to RSU															
12-1580	Plumbing & Drainage System	60	60	0%	20-Feb-25	21-Apr-25	27-Feb-25	27-Apr-25	6						
12-1590	MVAC System	60	60	0%	20-Feb-25	21-Apr-25	12-Feb-25	12-Apr-25	-9						
12-1600	Fire Service System (Elevated Driveway)	60	60	0%	20-Feb-25	21-Apr-25	27-Jan-25	27-Mar-25	-25						
12-1610	Electrical and Lighting System	60	60	0%	20-Feb-25	21-Apr-25	14-Feb-25	14-Apr-25	-7						
12-1620	CCTV & Surveillance System	60	60	0%	03-Feb-25	04-Apr-25	01-Nov-24	30-Dec-24	-95						
Elevated Drive Way RSU to RSAF															
12-1630	Plumbing & Drainage System	60	60	0%	27-Mar-25	25-May-25	27-Feb-25	27-Apr-25	-28						
12-1640	MVAC System	60	60	0%	27-Mar-25	25-May-25	12-Feb-25	12-Apr-25	-43						
12-1650	Fire Service System (Elevated Driveway)	60	60	0%	27-Mar-25	25-May-25	27-Jan-25	27-Mar-25	-59						
12-1660	Electrical and Lighting System	60	60	0%	27-Mar-25	25-May-25	14-Feb-25	14-Apr-25	-41						
12-1670	CCTV & Surveillance System	60	60	0%	27-Mar-25	25-May-25	31-Dec-24	28-Feb-25	-86						
ACC Equipment Structure BS Works															
12-1580(5a)	Plumbing & Drainage System	60	60	0%	22-Jan-25	22-Mar-25	27-Feb-25	27-Apr-25	36						
12-1590(5a)	MVAC System	90	90	0%	22-Jan-25	21-Apr-25	13-Jan-25	12-Apr-25	-9						
12-1600(5a)	Fire Service System (Equipment/Appliance)	60	60	0%	22-Jan-25	22-Mar-25	27-Jan-25	27-Mar-25	5						
12-1610(5a)	Electrical and Lighting System	60	60	0%	22-Jan-25	22-Mar-25	27-Dec-24	24-Feb-25	-26						
12-1620(5a)	Security, Surveillance & Communication System	60	60	0%	22-Jan-25	22-Mar-25	01-Nov-24	30-Dec-24	-82						
Vehicle Fuel Filling Station BS Works															
12-2020(6D)	Fire Service System (Vehicle Filling Station)	60	60	0%	23-Feb-25	23-Apr-25	01-Dec-24	29-Jan-25	-84						
12-2030(6D)	Electrical and Lighting System (Vehicle Filling Station)	60	60	0%	23-Feb-25	23-Apr-25	01-Dec-24	29-Jan-25	-84						
12-2040(6D)	Security, Surveillance & Communication System (Vehicle Filling Station)	30	30	0%	23-Feb-25	24-Mar-25	01-Dec-24	30-Dec-24	-84						
12-2050(6D)	Install Fuel Filling Kiosk	60	60	0%	23-Feb-25	23-Apr-25	11-Apr-25	09-Jun-25	47						
Fire Boat Access BS System															
12-2130(6D)	Diesel Generator & Electrical System (Berth)	60	60	0%	18-Mar-25	16-May-25	27-Mar-25	25-May-25	9						
12-2140(6D)	Microwave Transmission System (Berth)	60	60	0%	18-Mar-25	16-May-25	27-Mar-25	25-May-25	9						



Activity ID	Activity Name	Original Duration	Remaining Duration	Activity % Complete	Current Start	Current Finish	Late Start	Late Finish	Total Float	M85 Remarks	2024											
											Dec 85	Jan 86	Feb 87	Mar 88								
Seawater Intake Chamber BS Works																						
12-1630(7)	Plumbing & Drainage System	60	60	0%	26-Jan-25	26-Mar-25	01-Nov-24	30-Dec-24	-86													
12-1640(7)	MVAC System	60	60	0%	26-Jan-25	26-Mar-25	12-Feb-25	12-Apr-25	17													
12-1650(7)	Fire Service System (Equipment/Appliance)	60	60	0%	26-Jan-25	26-Mar-25	27-Jan-25	27-Mar-25	1													
12-1660(7)	Electrical and Lighting System	60	60	0%	26-Jan-25	26-Mar-25	01-Nov-24	30-Dec-24	-86													
12-1670(7)	Security, Surveillance & Communication System	60	60	0%	26-Jan-25	26-Mar-25	01-Nov-24	30-Dec-24	-86													
Process Equipment Installation																						
Process Building - Waste Bunker & Tipping Hall Bld Process Equipment Installation																						
Equipment, Piping and Instrument Installation and Connection Works																						
Process Building (Module 1)																						
12-3010(6F)	Piping Installation Works	80	31	61.25%	30-Jun-24	30-Jan-25	04-Aug-24	03-Sep-24	-149													
12-3020(6F)	Pipe Testing	60	60	0%	31-Dec-24	28-Feb-25	30-Jul-24	27-Sep-24	-154													
12-3030(6F)	Piping Insulation Works	60	60	0%	31-Dec-24	28-Feb-25	30-Jul-24	27-Sep-24	-154													
Process Building (Module 2)																						
12-3040(6F)	Embedded Piping Installation	60	9	85%	02-Jan-24	08-Jan-25	05-Aug-24	13-Aug-24	-148													
12-3050(6F)	Piping Installation Works	60	60	0%	31-Dec-24	28-Feb-25	30-Jul-24	27-Sep-24	-154													
12-3060(6F)	Pipe Testing	60	60	0%	15-Jan-25	15-Mar-25	14-Aug-24	12-Oct-24	-154													
12-3070(6F)	Piping Insulation Works	60	60	0%	30-Jan-25	30-Mar-25	29-Aug-24	27-Oct-24	-154													
12-3075(M71)	Equipment Installation at Basin Area at +6.5mPD (Included Boiler Drainage Tanks)	90	29	67.78%	15-Aug-24	28-Jan-25	12-Aug-24	09-Sep-24	-141													
Process Building (Module 3)																						
12-3080(6F)	Embedded Piping Installation	60	9	85%	05-Feb-24	08-Jan-25	20-Sep-24	28-Sep-24	-102													
12-3090(6F)	Piping Installation Works	60	60	0%	06-Jan-25	07-Mar-25	30-Aug-24	28-Oct-24	-129													
12-3100(6F)	Pipe Testing	60	60	0%	05-Feb-25	06-Apr-25	29-Sep-24	27-Nov-24	-129													
12-3110(6F)	Piping Insulation Works	60	60	0%	07-Mar-25	06-May-25	29-Oct-24	27-Dec-24	-129													
Process Building (WWTP)																						
12-3160(6F)	Embedded Piping Installation	60	31	48.42%	20-Sep-23	01-Feb-25	23-Oct-24	22-Nov-24	-71													
Ash Treatment Equipment (Module 1)																						
12-4000(6G_R1)	Deliver and installation of Ash Treatment Equipments	120	6	95%	10-Mar-24	05-Jan-25	23-Aug-24	28-Aug-24	-130													
Ash Treatment Equipment (Module 2)																						
12-4010(6G_R1)	Deliver and installation of Ash Treatment Equipments	120	48	60%	30-Jun-24	16-Feb-25	11-Aug-24	27-Sep-24	-142													
Ash Treatment Equipment (Module 3)																						
12-4020(6G_R1)	Deliver and installation of Ash Treatment Equipments	120	48	60%	15-Jul-24	16-Feb-25	11-Sep-24	28-Oct-24	-111													
Process Building (Cranes and Shredder)																						
Process Building (Module 1)																						
13-1000(M81)	Waste Crane Nos. 1 & 2 Installation @+41.6mPD	40	20	50%	08-Dec-24	11-Mar-25	08-Dec-24	27-Dec-24	-74													
13-1000-1(6)	Ash Crane Nos. 1 & 2 Installation @+15.3mPD	70	63	10%	20-Dec-24	03-Mar-25	11-Oct-24	12-Dec-24	-81	Update Actual Start Date												
13-1000-2(6)	Shredder No.1 Installation	39	39	0%	11-Jan-25	19-Feb-25	19-Aug-24	27-Sep-24	-144													
13-1000-3(6)	Waste Crane Hoists Installation (Grid PB1-PB2 and PB11-PB12)	30	30	0%	20-Feb-25	21-Mar-25	08-Dec-24	06-Jan-25	-74													
13-1000-5(6B)	Waste Crane Control Room 1 Equipment (+33.5)	70	49	30%	31-Oct-24	17-Feb-25	01-Dec-24	18-Jan-25	-30													
13-1000-6(6B)	EOTC & Monorail Hoist System installation in Ash Crane Control Room (+15.8mPD & +19.9mPD)	70	70	0%	11-Jan-25	21-Mar-25	04-Oct-24	12-Dec-24	-99													
13-1000-7(6B)	EOTC & Monorail Hoist System installation in Mechanical Shredder Area +28.5mPD	70	70	0%	11-Jan-25	21-Mar-25	10-Nov-24	18-Jan-25	-62													
13-1000-8(6B)	Monorail Hoist System installation in CCR Electrical Switch room +13.75mPD	60	60	0%	31-Dec-24*	28-Feb-25	09-Feb-25	09-Apr-25	40													
13-1000-9(6B)	Monorail Hoist System installation in CCR Electrical Switch room +23mPD	60	60	0%	31-Dec-24*	28-Feb-25	09-Feb-25	09-Apr-25	40													
13-1010(6B)	EOTC Hoist System installation in Main Workshop & Store +15.3mPD	60	21	65%	15-Mar-24	20-Jan-25	29-Dec-24	18-Jan-25	-2													
13-1020(M81)	Ash Crane Control Room 1 Equipment	4	4	0%	11-Jan-25	14-Jan-25	09-Dec-24	12-Dec-24	-33													
Process Building (Module 2)																						
13-1004(M81)	Waste Crane Nos. 3 Installation	30	30	0%	22-Mar-25	20-Apr-25	08-Dec-24	06-Jan-25	-104													
13-1004-1(M71)	Ash Crane No. 3 Installation @+15.3mPD	70	70	0%	21-Dec-24	10-Mar-25	22-Oct-24	30-Dec-24	-70													
13-1004-2(M71)	Shredder No.2 Installation	41	41	0%	22-Jan-25	03-Mar-25	03-Sep-24	13-Oct-24	-141													
13-1004-6(M71)	EOTC & Monorail Hoist System installation in Ash Crane Control Room (+15.8mPD & +19.9mPD)	70	70	0%	05-Feb-25	16-Apr-25	22-Oct-24	30-Dec-24	-106													
13-1004-7(M71)	EOTC & Monorail Hoist System installation in Mechanical Shredder Area +28.5mPD	70	70	0%	31-Dec-24*	10-Mar-25	10-Nov-24	18-Jan-25	-51													
13-1008-5(M71)	Waste Crane Control Room 2 Equipment	70	70	0%	21-Feb-25	02-May-25	28-Nov-24	05-Feb-25	-85													
13-1008-8(M81)	Ash Control Room 2 Equipment	30	30	0%	21-Feb-25	23-Mar-25	01-Dec-24	30-Dec-24	-82													
Process Building (Module 3)																						
13-1008-0(M81)	Waste Crane Nos. 4 Installation	30	30	0%	22-Mar-25	20-Apr-25	08-Dec-24	06-Jan-25	-104	Added predecessor 10-220-1(M81), Removed predecessor 10-220-2(M81)												
13-1008-1(M71)	Ash Crane No. 4 Installation @+15.3mPD	70	70	0%	21-Dec-24	12-Mar-25	22-Oct-24	30-Dec-24	-72													
Process Building (WWTP Equipment Installation)																						
Stage 1 (WWTP Pre-Treatment)																						
13-1009-1(M82)	Mechanical Equipment and Piping Installation	30	18	40%	07-Jul-24	17-Jan-25	07-Nov-24	25-Nov-24	-54													
13-1009-2(M82)	Electrical and Instrumentation Installation	43	43	0%	14-Jan-25	25-Feb-25	21-Nov-24	02-Jan-25	-54													
Stage 2 (WWTP Remaining)																						
13-1010-1(6)	WWTP Piping and instrument installation	120	60	50.04%	01-Mar-23	02-Mar-25	23-Oct-24	21-Dec-24	-71													
13-1010-10(6E)	Provision of Temporary Power Supply for WWTP Testing & Commissioning	56	56	0%	06-Jan-25	02-Mar-25	27-Oct-24	21-Dec-24	-71													
13-1010-11(M63)	Cooling Tower installation @+17.5 mPd	48	48	0%	07-Jan-25	24-Feb-25	04-Dec-24	20-Jan-25	-34													
13-1010-12(M63)	Equipments for Bio-Tank Area @+3.3mPd	120	54	55.04%	07-Jul-24	25-Feb-25	29-Oct-24	21-Dec-24	-65													
13-1010-13(M63)	Equipments for Centrate Area, Inlet Sump & EQ Tank Area @+2.0mPd	60	60	0%	02-Jan-25	02-Mar-25	23-Oct-24	21-Dec-24	-71													
13-1010-2(6)	WWTP Electrical Equipment installation & Cable pulling and termination	60	60	0%	22-Jan-25	22-Mar-25	23-Oct-24	21-Dec-24	-91													
13-1010-5(6B)	EOTC Hoist System installation in WWTP +6.5	60	28	53.42%	15-Aug-24	29-Jan-25	04-Nov-24	01-Dec-24	-59													
13-1010-6(6B)	Monorail Hoist System installation in WWTP +10mPD & +13.3mPD	60	60	0%	02-Jan-25	02-Mar-25	03-Oct-24	01-Dec-24	-91													
13-1010-7(6B)	LVSG 6A/6B @ WWTP Switch room +13.3mPD	60	60	0%	02-Jan-25	02-Mar-25	03-Oct-24	01-Dec-24	-91													
13-1010-8(6B)	UPS DB @ WWTP Switch room @13.3mPd	60	60	0%	02-Jan-25	02-Mar-25	03-Oct-24	01-Dec-24	-91													
13-1020(6F)	Equipment Installation for Equipment Rm, Sludge Dewatering Rm & Chemical Rm Area @+6.5mPd	90	21	76.73%	21-Aug-24	22-Jan-25	01-Dec-24	21-Dec-24	-32													

Activity ID	Activity Name	Original Duration	Remaining Duration	Activity % Complete	Current Start	Current Finish	Late Start	Late Finish	Total Float	M85 Remarks	2024				2025															
											Dec 85	Jan 86	Feb 87	Mar 88	Jan 86	Feb 87	Mar 88	Apr 89												
13-1030(6F)	Equipment Installation for MBR Tank, DAF & Chemical Tank Area @+10.0mPd	60	30	50%	02-Dec-24 A	01-Feb-25	02-Nov-24	01-Dec-24	-61	Update Actual Start Date																				
13-1040(6F)	Equipment for Pretreatment, Chemical Tank, RO, MBR, AQP, MCC & Control Area @+12.5mPd	60	36	40%	20-Aug-24 A	07-Feb-25	17-Oct-24	21-Nov-24	-77																					
Process Building (Central Control System Installation)												58	55		01-Dec-24 A	24-Feb-25	12-Sep-24	09-Apr-25	45											
13-1010-3(6B)	Workstations and Control System Installation (Control Room 2 +36.5mPD)	58	55	5%	01-Dec-24 A	24-Feb-25	12-Sep-24	06-Nov-24	-109	Update Actual Start Date																				
13-1980	Control Systems Installation at CCR	44	44	0%	31-Dec-24	12-Feb-25	24-Sep-24	06-Nov-24	-98																					
13-1990	Cable laying and Termination	44	44	0%	31-Dec-24	12-Feb-25	24-Sep-24	06-Nov-24	-98																					
13-2160(6B)	DCS Installation	44	44	0%	31-Dec-24	12-Feb-25	24-Sep-24	06-Nov-24	-98																					
13-2210(6B)	CMMS Installation	44	44	0%	31-Dec-24	12-Feb-25	24-Sep-24	06-Nov-24	-98																					
13-2260(6B)	IDMS Installation	44	44	0%	31-Dec-24	12-Feb-25	24-Sep-24	06-Nov-24	-98																					
13-2270(6B)	OMS Installation	44	44	0%	31-Dec-24	12-Feb-25	24-Sep-24	06-Nov-24	-98																					
13-2280(6D)	Monorail Hoist System installation in CCR Electrical Switch room +13.75mPD	44	44	0%	31-Dec-24	12-Feb-25	25-Feb-25	09-Apr-25	56																					
Process Building (Switch Room)												166	38		20-Aug-24 A	07-Feb-25	29-Aug-24	27-Oct-24	-102											
13-1000-4(6B)	Waste Crane Switch room E&I Equipment installation @+29.5mPd, inclusive of Control Chair and Junction box in WCCR	60	36	40%	15-Nov-24 A	04-Feb-25	22-Sep-24	27-Oct-24	-100																					
13-1010-4(6B)	Workstations and Control System Installation (Switch Room +28.25mPD)	45	38	15%	04-Dec-24 A	07-Feb-25	04-Sep-24	12-Oct-24	-117	Update Actual Start Date																				
13-2280(6B)	Transformer @ Process Bldg. switch room x4 Nos. @+13.3 mPD	90	5	95%	07-Sep-24 A	04-Jan-25	08-Oct-24	12-Oct-24	-84																					
13-2280-1(6B)	LVSG 1A/1B and 2A/2B (below Toilet/Server Room - Process building Switch room)	60	21	65%	21-Oct-24 A	20-Jan-25	07-Sep-24	27-Sep-24	-115																					
13-2280-2(6B)	UPS @ Process Building Switch room and Battery room	90	30	50%	20-Aug-24 A	29-Jan-25	29-Aug-24	27-Sep-24	-124																					
Process Building - Boiler House & Flue Gas Treatment Bid Process Equipment Installation												132	132		01-Dec-24 A	11-May-25	12-Aug-24	27-Dec-24	-135											
Process Building (Installation TPU Module)												132	132		01-Dec-24 A	11-May-25	12-Aug-24	27-Dec-24	-135											
TPU Train 1												92	92		01-Dec-24 A	01-Apr-25	13-Aug-24	06-Dec-24	-116											
13-1040	Boiler Condition Check and Repair	70	70	0%	31-Dec-24	10-Mar-25	28-Sep-24	06-Dec-24	-94																					
13-1070	Pipe Insulation Works	46	46	0%	31-Dec-24	14-Feb-25	13-Aug-24	27-Sep-24	-140	Update Original Duration from 60d to 46d																				
13-1080	Electrical instrument and Cabling Works	60	46	0%	01-Dec-24 A	14-Feb-25	13-Aug-24	27-Sep-24	-140	Update Actual Start Date																				
13-1100	Boiler Refractory works	60	60	0%	01-Feb-25*	01-Apr-25	08-Oct-24	06-Dec-24	-116	Update Original Duration from 75d to 60d																				
TPU Train 2												92	92		31-Dec-24	01-Apr-25	13-Aug-24	06-Dec-24	-116											
13-1130	Boiler Condition Check and Repair	70	70	0%	31-Dec-24	10-Mar-25	28-Sep-24	06-Dec-24	-94																					
13-1160	Pipe Insulation Works	46	46	0%	31-Dec-24	14-Feb-25	13-Aug-24	27-Sep-24	-140	Update Original Duration from 60d to 46d																				
13-1170	Electrical instrument and Cabling Works	46	46	0%	31-Dec-24	14-Feb-25	13-Aug-24	27-Sep-24	-140	Update Original Duration from 60d to 46d																				
13-1190	Boiler Refractory works	60	60	0%	01-Feb-25*	01-Apr-25	08-Oct-24	06-Dec-24	-116	Update Original Duration from 75d to 60d																				
TPU Train 3												87	87		11-Dec-24 A	27-Mar-25	12-Aug-24	24-Dec-24	-93											
13-1220	Boiler Condition Check and Repair	71	71	0%	31-Dec-24	11-Mar-25	15-Oct-24	24-Dec-24	-77																					
13-1250	Pipe Insulation Works	46	46	0%	31-Dec-24	14-Feb-25	09-Nov-24	24-Dec-24	-52	Update Original Duration from 60d to 46d																				
13-1260	Electrical instrument and Cabling Works	46	46	0%	31-Dec-24	14-Feb-25	28-Aug-24	12-Oct-24	-125	Update Original Duration from 60d to 46d																				
13-1270	Boiler Pressure Test	15	12	20%	11-Dec-24 A	11-Jan-25	12-Aug-24	23-Aug-24	-141																					
13-1280	Boiler Refractory works	75	75	0%	12-Jan-25	27-Mar-25	11-Oct-24	24-Dec-24	-93																					
TPU Train 4												102	102		31-Dec-24	11-Apr-25	24-Aug-24	24-Dec-24	-108											
13-1310	Boiler Condition Check and Repair	70	70	0%	19-Jan-25	29-Mar-25	16-Oct-24	24-Dec-24	-95																					
13-1340	Pipe Insulation Works	46	46	0%	31-Dec-24	14-Feb-25	09-Nov-24	24-Dec-24	-52	Update Original Duration from 60d to 46d																				
13-1350	Electrical instrument and Cabling Works	46	46	0%	31-Dec-24	14-Feb-25	28-Aug-24	12-Oct-24	-125	Update Original Duration from 60d to 46d																				
13-1360	Boiler Pressure Test	15	15	0%	12-Jan-25	26-Jan-25	24-Aug-24	07-Sep-24	-141																					
13-1370	Boiler Refractory works	75	75	0%	27-Jan-25	11-Apr-25	11-Oct-24	24-Dec-24	-108																					
TPU Train 5												117	117		31-Dec-24	26-Apr-25	30-Aug-24	27-Dec-24	-120											
13-1490	Boiler Condition Check and Repair	70	70	0%	03-Feb-25	13-Apr-25	19-Oct-24	27-Dec-24	-107																					
13-1520	Pipe Insulation Works	46	46	0%	31-Dec-24	14-Feb-25	12-Nov-24	27-Dec-24	-49	Update Original Duration from 60d to 46d																				
13-1530	Electrical instrument and Cabling Works	46	46	0%	31-Dec-24	14-Feb-25	30-Aug-24	14-Oct-24	-123	Update Original Duration from 60d to 46d																				
13-1540	Boiler Pressure Test	15	15	0%	27-Jan-25	10-Feb-25	08-Sep-24	22-Sep-24	-141																					
13-1550	Boiler Refractory works	75	75	0%	11-Feb-25	26-Apr-25	14-Oct-24	27-Dec-24	-120																					
TPU Train 6												132	132		31-Dec-24	11-May-25	30-Aug-24	27-Dec-24	-135											
13-1400	Boiler Condition Check and Repair	70	70	0%	18-Feb-25	28-Apr-25	19-Oct-24	27-Dec-24	-122																					
13-1430	Pipe Insulation Works	46	46	0%	31-Dec-24	14-Feb-25	12-Nov-24	27-Dec-24	-49	Update Original Duration from 60d to 46d																				
13-1440	Electrical instrument and Cabling Works	46	46	0%	31-Dec-24	14-Feb-25	30-Aug-24	14-Oct-24	-123	Update Original Duration from 60d to 46d																				
13-1450	Boiler Pressure Test	15	15	0%	11-Feb-25	25-Feb-25	23-Sep-24	07-Oct-24	-141																					
13-1460	Boiler Refractory works	75	75	0%	26-Feb-25	11-May-25	14-Oct-24	27-Dec-24	-135																					
Process Building (Installation of Flue Gas Module)												119	119		31-Dec-24	28-Apr-25	13-Aug-24	27-Dec-24	-122											
FGC Train 1												70	70		31-Dec-24	10-Mar-25	13-Aug-24	06-Dec-24	-94											
13-1580	FGC Unit Condition Check and Repair	70	70	0%	31-Dec-24	10-Mar-25	28-Sep-24	06-Dec-24	-94																					
13-1610	Pipe Insulation Works	46	46	0%	31-Dec-24	14-Feb-25	13-Aug-24	27-Sep-24	-140	Update Original Duration from 60d to 46d																				
13-1620	Electrical instrument and Cabling Works	46	46	0%	31-Dec-24	14-Feb-25	13-Aug-24	27-Sep-24	-140	Update Original Duration from 60d to 46d																				
FGC Train 2												70	70		31-Dec-24	10-Mar-25	13-Aug-24	06-Dec-24	-94											
13-1650	FGC Unit Condition Check and Repair	70	70	0%	31-Dec-24	10-Mar-25	28-Sep-24	06-Dec-24	-94																					
13-1680	Pipe Insulation Works	46	46	0%	31-Dec-24	14-Feb-25	13-Aug-24	27-Sep-24	-140	Update Original Duration from 60d to 46d																				
13-1690	Electrical instrument and Cabling Works	46	46	0%	31-Dec-24	14-Feb-25	13-Aug-24	27-Sep-24	-140	Update Original Duration from 60d to 46d																				
FGC Train 3												70	70		31-Dec-24	10-Mar-25	13-Aug-24	24-Dec-24	-76											
13-1720	FGC Unit Condition Check and Repair	70	70	0%	31-Dec-24	10-Mar-25	16-Oct-24	24-Dec-24	-76																					
13-1750	Pipe Insulation Works	46	46	0%	31-Dec-24	14-Feb-25	13-Aug-24	27-Sep-24	-140	Update Original Duration from 60d to 46d																				
13-1760	Electrical instrument and Cabling Works	46	46	0%	31-Dec-24	14-Feb-25	13-Aug-24	27-Sep-24	-140	Update Original Duration from 60d to 46d																				
FGC Train 4												89	89		31-Dec-24	29-Mar-25	13-Aug-24	24-Dec-24	-95											
13-1790	FGC Unit Condition Check and Repair	70	70	0%	19-Jan-25	29-Mar-25	16-Oct-24	24-Dec-24	-95																					
13-1795(6A)	Installation 4 nos. of Transformers for Process Module 2	14	14	0%	31-Dec-24	13-Jan-25	15-Aug-24	28-Aug-24	-138																					
13-1820	Pipe Insulation Works	46	46	0%	31-Dec-24	14-Feb-25	13-Aug-24	27-Sep-24	-140	Update Original Duration from																				

Activity ID	Activity Name	Original Duration	Remaining Duration	Activity % Complete	Current Start	Current Finish	Late Start	Late Finish	Total Float	M&S Remarks	2024			
											Dec 85	Jan 86	Feb 87	Mar 88
13-1890	Pipe Insulation Works	46	46	0%	31-Dec-24	14-Feb-25	14-Aug-24	28-Sep-24	-139	Update Original Duration from 60d to 46d				
13-1900	Electrical Instrument and Cabling Works	46	46	0%	31-Dec-24	14-Feb-25	14-Aug-24	28-Sep-24	-139	Update Original Duration from 60d to 46d				
FGC Train 6		119	119		31-Dec-24	28-Apr-25	14-Aug-24	27-Dec-24	-122					
13-1930	FGC Unit Condition Check and Repair	70	70	0%	18-Feb-25	28-Apr-25	19-Oct-24	27-Dec-24	-122					
13-1935(6A)	Installation 4 nos. of Transformers for Process Module 3	14	14	0%	31-Dec-24	13-Jan-25	15-Sep-24	28-Sep-24	-107					
13-1960	Pipe Insulation Works	46	46	0%	31-Dec-24	14-Feb-25	14-Aug-24	28-Sep-24	-139	Update Original Duration from 60d to 46d				
13-1970	Electrical Instrument and Cabling Works	46	46	0%	31-Dec-24	14-Feb-25	14-Aug-24	28-Sep-24	-139	Update Original Duration from 60d to 46d				
ACC Equipment Installation		366	152		15-May-24 A	31-May-25	21-Aug-24	02-Jan-25	-149					
ACC Equipment 1 Installation		308	94		15-May-24 A	03-Apr-25	21-Aug-24	12-Dec-24	-112					
13-2000-1(M63)	Condensate Tank & Equipments Delivery and Installation (Module 1)	80	18	78%	15-May-24 A	17-Jan-25	21-Aug-24	07-Sep-24	-132					
13-2010	Piping and Instrument Installation and Connection Works	50	50	0%	31-Dec-24	18-Feb-25	10-Sep-24	29-Oct-24	-112					
13-2010-1(6E)	Air Tight Test	14	14	0%	19-Feb-25	04-Mar-25	23-Nov-24	06-Dec-24	-88					
13-2020	Pipe Insulation Works	80	80	0%	14-Jan-25	03-Apr-25	24-Sep-24	12-Dec-24	-112					
13-2030	Cable Laying and Termination Works	80	80	0%	31-Dec-24	20-Mar-25	24-Sep-24	12-Dec-24	-98					
ACC Equipment 2 Installation		155	94		26-Oct-24 A	03-Apr-25	21-Aug-24	30-Dec-24	-94					
13-2040-1(M63)	Condensate Tank & Equipments Delivery and Installation (Module 2)	90	49	15%	26-Oct-24 A	17-Feb-25	21-Aug-24	08-Oct-24	-132					
13-2050	Piping and Instrument Installation and Connection Works	64	64	0%	31-Dec-24	04-Mar-25	16-Sep-24	18-Nov-24	-106					
13-2050-1(6E)	Air Tight Test	14	14	0%	05-Mar-25	18-Mar-25	11-Dec-24	24-Dec-24	-84					
13-2060	Pipe Insulation Works	80	80	0%	14-Jan-25	03-Apr-25	06-Oct-24	24-Dec-24	-100	Update Original Duration from 90d to 80d				
13-2070	Cable Laying and Termination Works	80	80	0%	14-Jan-25	03-Apr-25	12-Oct-24	30-Dec-24	-94	Update Original Duration from 90d to 80d				
ACC Equipment 3 Installation		135	135		17-Jan-25	31-May-25	21-Aug-24	02-Jan-25	-149					
13-2080-1(M63)	Condensate Tank & Equipments Delivery and Installation (Module 3)	90	90	0%	17-Jan-25	16-Apr-25	21-Aug-24	18-Nov-24	-149					
13-2090	Piping and Instrument Installation and Connection Works	90	90	0%	01-Feb-25	01-May-25	05-Sep-24	03-Dec-24	-149					
13-2100	Pipe Insulation Works	90	90	0%	03-Mar-25	31-May-25	05-Oct-24	02-Jan-25	-149					
13-2110	Cable Laying and Termination Works	90	90	0%	03-Mar-25	31-May-25	05-Oct-24	02-Jan-25	-149					
Turbine Hall Bld Equipment Installation		224	86		15-Aug-24 A	26-Mar-25	30-Jul-24	09-Apr-25	14					
Turbine Hall Module 1 Installation		98	37		07-Oct-24 A	06-Feb-25	10-Sep-24	24-Nov-24	-73					
13-2130	Equipment, Piping and Instrument Installation and Connection Works	52	10	80%	07-Oct-24 A	10-Jan-25	10-Sep-24	20-Sep-24	-111					
13-2130-1(6E)	STG & TBS Piping hydrostatic test	7	7	0%	10-Jan-25	17-Jan-25	21-Sep-24	27-Sep-24	-111					
13-2140	Turbine Hall Piping Insulation Works	32	32	0%	05-Jan-25	06-Feb-25	24-Oct-24	24-Nov-24	-73					
13-2150	Turbine Electrical installation and instrumentation Works	32	29	10%	13-Dec-24 A	06-Feb-25	27-Oct-24	24-Nov-24	-73					
Turbine Hall Module 2 Installation		136	75		07-Oct-24 A	15-Mar-25	05-Aug-24	14-Dec-24	-91					
13-2180	Equipment, Piping and Instrument Installation and Connection Works	60	48	20%	07-Oct-24 A	16-Feb-25	05-Aug-24	21-Sep-24	-148					
13-2180-1(6E)	STG & TBS Piping hydrostatic test	7	7	0%	17-Feb-25	23-Feb-25	22-Sep-24	28-Sep-24	-148					
13-2190	Turbine Hall Piping Insulation Works	60	60	0%	15-Jan-25	15-Mar-25	16-Oct-24	14-Dec-24	-91					
13-2200	Turbine Electrical installation and instrumentation Works	46	46	0%	02-Jan-25	16-Feb-25	30-Aug-24	14-Oct-24	-125	Update Original Duration from 60d to 46d				
Turbine Hall Module 3 Installation		109	78		13-Nov-24 A	18-Mar-25	30-Jul-24	17-Dec-24	-91					
13-2230	Equipment, Piping and Instrument Installation and Connection Works	60	48	20%	13-Nov-24 A	16-Feb-25	28-Aug-24	14-Oct-24	-125					
13-2230-1(6E)	STG & TBS Piping hydrostatic test	7	7	0%	17-Feb-25	23-Feb-25	21-Nov-24	27-Nov-24	-88					
13-2240	Turbine Hall Piping Insulation Works	60	60	0%	18-Jan-25	18-Mar-25	19-Oct-24	17-Dec-24	-91					
13-2250	Turbine Electrical installation and instrumentation Works	77	77	0%	31-Dec-24	17-Mar-25	30-Jul-24	14-Oct-24	-154					
Turbine Hall Electrical Room Equipment Installation		224	86		15-Aug-24 A	26-Mar-25	16-Sep-24	09-Apr-25	14					
13-2280-1(6A)	Transport and Position 4 nos. of Transformers @ 1F (ZH)	15	2	90%	14-Oct-24 A	01-Jan-25	14-Oct-24	15-Oct-24	-78					
13-2300	Other Associated Equipment Installation	60	24	60%	14-Oct-24 A	23-Jan-25	25-Oct-24	17-Nov-24	-67					
13-2310	Cable Laying and Termination for Module 1	79	47	40%	15-Sep-24 A	16-Feb-25	08-Oct-24	24-Nov-24	-83					
13-2730(7)	Cable Laying and Termination for Module 2	86	86	0%	31-Dec-24	26-Mar-25	20-Sep-24	14-Dec-24	-102					
13-2740(7)	Cable Laying and Termination for Module 3	86	86	0%	31-Dec-24	26-Mar-25	23-Sep-24	17-Dec-24	-99					
Turbine Hall Electrical Room @+15.00mPD		198	60		15-Aug-24 A	28-Feb-25	16-Sep-24	09-Apr-25	40					
13-2290-1(6B)	Switchgear & electrical equipment Installation 1F - I&C room (I/O, Server, Control Panel, Workstation)	120	30	75%	15-Aug-24 A	29-Jan-25	16-Sep-24	15-Oct-24	-106					
13-2290-2(6B)	Switchgear & electrical equipment Installation 1F - Generator Control Room (GPP,SP,DC batter Charger,Generator contr	120	30	75%	15-Aug-24 A	29-Jan-25	16-Sep-24	15-Oct-24	-106					
13-2290-3(6B)	Switchgear & electrical equipment Installation 1F - Battery Room (AC UPS,DC Battery Charger)	120	30	75%	15-Aug-24 A	29-Jan-25	16-Sep-24	15-Oct-24	-106					
13-2290-4(6B)	Switchgear & electrical equipment Installation 1F - HV Switch room (GCB)	60	15	75%	07-Oct-24 A	14-Jan-25	01-Oct-24	15-Oct-24	-91					
13-2290-5(6B)	Monorail Hoist System installation in Turbine Hall (1st Floor @+15)	60	60	0%	31-Dec-24	28-Feb-25	09-Feb-25	09-Apr-25	40					
Turbine Hall Electrical Room @+23.50mPD		152	60		30-Aug-24 A	28-Feb-25	08-Oct-24	09-Apr-25	40					
13-2280-2(6A)	Installation 6 nos. of Transformers @ Turbine Hall Electrical Room 3F 23.5mPD	60	3	95%	30-Aug-24 A	02-Jan-25	13-Oct-24	15-Oct-24	-79					
13-2290	Switchgear & electrical equipment Installation 3F (MCC-7,8,9,14,15,16, VSD ,soft starter,UPS)	60	15	75%	07-Oct-24 A	14-Jan-25	08-Oct-24	22-Oct-24	-84					
13-2290-6(6B)	Monorail Hoist System installation in Turbine Hall (3rd Floor @+23.5)	60	60	0%	31-Dec-24	28-Feb-25	09-Feb-25	09-Apr-25	40					
Compressor & CCCW Bld Equipment Installation		259	45		01-May-24 A	13-Feb-25	16-Sep-24	30-Oct-24	-106					
Air Compressor Equipment Installation		90	9		01-Jun-24 A	08-Jan-25	22-Sep-24	30-Sep-24	-100					
13-2710(M62)	Electrical Instrumentation and Insulation Installations	90	9	90%	01-Jun-24 A	08-Jan-25	22-Sep-24	30-Sep-24	-100					
13-2720(M62)	Cable Laying and Termination Works for Air Compressor	90	9	90%	01-Jun-24 A	08-Jan-25	22-Sep-24	30-Sep-24	-100					
CCCW Bld Equipment Installation		259	45		01-May-24 A	13-Feb-25	16-Sep-24	30-Oct-24	-106					
13-2330	CCCW Equipment Installation	100	10	90%	01-May-24 A	09-Jan-25	21-Sep-24	30-Sep-24	-101					
13-2340	Piping installation and connections	90	27	70%	01-Jun-24 A	26-Jan-25	16-Sep-24	12-Oct-24	-106					
13-2350	Electrical Instrumentation and Insulation Installations	45	45	0%	31-Dec-24	13-Feb-25	16-Sep-24	30-Oct-24	-106					
13-2360	Cable Laying and Termination Works	45	45	0%	31-Dec-24	13-Feb-25	16-Sep-24	30-Oct-24	-106					
Mechanical Treatment Plant Bld Process Equipment Installation		158	158		01-Mar-25	05-Aug-25	04-Oct-24	10-Mar-25	-148					
13-2370	MT Plant Process Mechanical Equipment Installation	158	158	0%	01-Mar-25	05-Aug-25	04-Oct-24	10-Mar-25	-148	Update Original Duration from 189d to 158d				
Water Treatment Bld Process Equipment Installation		366	181		20-Feb-24 A	30-Jun-25	26-Sep-24	09-May-25	-51					
Stage 1 (WTP Potable to Demin)		30	20		20-Feb-24 A	19-Jan-25	09-Oct-24	28-Oct-24	-83					
13-2385-2(M82)	Electrical and instrumentation Installation	30	20	34%	20-Feb-24 A	19-Jan-25	09-Oct-24	28-Oct-24	-83					
Stage 2 (WTP Remaining)		366	181		20-Feb-24 A	30-Jun-25	26-Sep-24	09-May-25	-51					

Activity ID	Activity Name	Original Duration	Remaining Duration	Activity % Complete	Current Start	Current Finish	Late Start	Late Finish	Total Float	M&S Remarks	2024			2025			
											Dec 85	Jan 86	Feb 87	Mar 88	Apr 89	May 90	Jun 91
13-2390	Mechanical Equipment and Piping Installation	150	15	90%	20-Feb-24 A	14-Jan-25	29-Nov-24	13-Dec-24	-32								
13-2410	Electrical and instrumentation Installation	62	42	33%	05-Nov-24 A	10-Feb-25	02-Nov-24	13-Dec-24	-59								
13-2410-2(6D)	Laboratory furniture installation @ WTP Bldg @+13.5mPD	120	120	0%	02-Mar-25	30-Jun-25	10-Jan-25	09-May-25	-51								
13-2410-4(6B)	EOTC & Monorail Hoist System installation in WTP +6.5mPD	90	33	63.33%	11-Aug-24 A	01-Feb-25	17-Dec-24	18-Jan-25	-14								
13-2410-5(6B)	Monorail Hoist System Installation in WTP +13.5mPD	90	90	0%	31-Dec-24	30-Mar-25	16-Jan-25	15-Apr-25	16								
13-2410-6(6B)	MCC-12 @ WTP Switch Room	62	16	75%	05-Nov-24 A	15-Jan-25	23-Oct-24	07-Nov-24	-69								
13-2410-7(6B)	DB for MCC-12 @ WTP Switch Room	47	42	10%	11-Dec-24 A	11-Feb-25	26-Sep-24	07-Nov-24	-95	Update Actual Start Date							
13-2410-8(6B)	UPS DB @ WTP Switch room @+6.5mPd	47	42	10%	11-Dec-24 A	11-Feb-25	26-Sep-24	07-Nov-24	-95	Update Actual Start Date							
IWMF Substation Bld Equipment Installation		252	64		15-May-24 A	04-Mar-25	01-Aug-24	07-Oct-24	-148								
13-2440	132kV GIS Switch Gear @+6.5mPD	110	8	92.73%	15-May-24 A	07-Jan-25	11-Sep-24	18-Sep-24	-111								
13-2450	GIS Insulation Switchboard installation	110	8	92.73%	15-May-24 A	07-Jan-25	11-Sep-24	18-Sep-24	-111								
13-2460	Main Switch Board Installation (11kV)	110	8	92.73%	15-May-24 A	07-Jan-25	27-Aug-24	03-Sep-24	-126								
13-2470	Other Associated Equipment Installation	30	30	0%	08-Jan-25	06-Feb-25	04-Sep-24	03-Oct-24	-126								
13-2480	Cable Laying and Termination	90	64	28.89%	01-Aug-24 A	04-Mar-25	01-Aug-24	03-Oct-24	-152								
13-2640(7)	Deliver and Position of EDGs (11kV)	30	23	23.33%	15-May-24 A	22-Jan-25	15-Sep-24	07-Oct-24	-107								
Elevated Drive Way & Storage Bld Equipment Installation		110	110		31-Dec-24	19-Apr-25	13-Nov-24	02-Mar-25	-48								
13-2500	Workshop Equipment	110	110	0%	31-Dec-24	19-Apr-25	13-Nov-24	02-Mar-25	-48								
13-2630(6A)	Installation 2nos. of Transformers (Ramp Area TX Room +6.5mPD)	30	30	0%	07-Feb-25	09-Mar-25	23-Nov-24	22-Dec-24	-76								
13-2630(7)	Electrical Cable laying and termination	60	60	0%	07-Feb-25	08-Apr-25	23-Nov-24	21-Jan-25	-76								
13-2630-2(6D)	EOTC Hoist System installation in Vehicle Workshop +6.5mPD	41	41	0%	31-Dec-24*	09-Feb-25	09-Dec-24	18-Jan-25	-22								
Seawater Intake Chamber		105	105		05-Mar-25	17-Jun-25	14-Dec-24	25-Sep-26	465								
13-2540-1(6B)	Monorail Hoist System installation in Sea Water Intake Pump Area	90	90	0%	20-Mar-25	17-Jun-25	28-Jun-26	25-Sep-26	465								
13-2540-2(7)	Seawater Intake Pumps and Associated equipment installation	30	30	0%	05-Mar-25	03-Apr-25	14-Dec-24	12-Jan-25	-81								
Equipment Installation at External Area		148	148		16-Jan-25	13-Jun-25	10-Oct-24	24-Feb-25	-109								
13-2510	Installation of Container Cranes at Berth Area	45	45	0%	17-Mar-25	01-May-25	05-Dec-24	18-Jan-25	-103								
13-2520	Fuel Oil Reception and Distribution System Installation at Berth Area	30	30	0%	16-Jan-25	15-Feb-25	10-Oct-24	08-Nov-24	-99	Changed dur to 30d							
13-2525	Weighbridge Equipment Installation (Inside Kiosk)	21	21	0%	10-Mar-25	30-Mar-25	22-Dec-24	11-Jan-25	-78								
13-2530	Weighbridge System & Equipment Installation (External)	14	14	0%	07-Mar-25	20-Mar-25	29-Dec-24	11-Jan-25	-68								
13-2540	Traffic Control System Installation & Testing	90	90	0%	16-Mar-25	13-Jun-25	27-Nov-24	24-Feb-25	-109								
External Process Pipe Works		265	143		25-Jun-24 A	22-May-25	30-Jul-24	30-Dec-24	-143								
Process and Non-process Piping Works		184	143		20-Oct-24 A	22-May-25	30-Jul-24	30-Dec-24	-143								
Piping from Module 1 to Turbine Bld		60	60		31-Dec-24	28-Feb-25	30-Jul-24	27-Sep-24	-154								
13-2560	Piping Pressure Test	60	60	0%	31-Dec-24	28-Feb-25	30-Jul-24	27-Sep-24	-154								
13-2570	Piping Insulation Works	60	60	0%	31-Dec-24	28-Feb-25	30-Jul-24	27-Sep-24	-154								
Pipe Rack Piping from Module 2 & 3 to Turbine Bld		90	90		31-Dec-24	30-Mar-25	31-Jul-24	28-Oct-24	-153								
13-2590	Piping Pressure Test	60	60	0%	31-Dec-24	28-Feb-25	31-Jul-24	28-Sep-24	-153								
13-2600	Piping Insulation Works	60	60	0%	30-Jan-25	30-Mar-25	30-Aug-24	28-Oct-24	-153								
Pipe Bridge B Piping from Turbine Bld 1 to CCCW Bld		85	85		31-Dec-24	25-Mar-25	04-Sep-24	27-Nov-24	-118								
13-2680	Piping Pressure Test	60	60	0%	31-Dec-24	28-Feb-25	04-Sep-24	02-Nov-24	-118								
13-2690	Piping Insulation Works	60	60	0%	25-Jan-25	25-Mar-25	29-Sep-24	27-Nov-24	-118								
Pipe Bridge B Piping from Turbine Bld 2&3 to CCCW Bld		90	90		31-Dec-24	30-Mar-25	15-Aug-24	12-Nov-24	-138								
13-2710	Piping Pressure Test	60	60	0%	31-Dec-24	28-Feb-25	15-Aug-24	13-Oct-24	-138								
13-2720	Piping Insulation Works	60	60	0%	30-Jan-25	30-Mar-25	14-Sep-24	12-Nov-24	-138								
Pipe Bridge C Piping from Turbine Bld to ACC 1		125	84		20-Oct-24 A	24-Mar-25	27-Sep-24	19-Dec-24	-95								
13-2640	Piping Installation Works	60	54	10%	20-Oct-24 A	22-Feb-25	27-Sep-24	19-Nov-24	-95								
13-2650	Piping Pressure Test	60	60	0%	09-Jan-25	09-Mar-25	06-Oct-24	04-Dec-24	-95								
13-2660	Piping Insulation Works	60	60	0%	24-Jan-25	24-Mar-25	21-Oct-24	19-Dec-24	-95								
Pipe Bridge C Piping from Turbine Bld to ACC 2		102	102		04-Jan-25	15-Apr-25	20-Sep-24	30-Dec-24	-106								
13-2700(M64)	Piping Installation Works	60	60	0%	04-Jan-25	04-Mar-25	20-Sep-24	18-Nov-24	-106								
13-2710(M64)	Piping Pressure Test	60	60	0%	25-Jan-25	25-Mar-25	11-Oct-24	09-Dec-24	-106								
13-2720(M64)	Piping Insulation Works	60	60	0%	15-Feb-25	15-Apr-25	01-Nov-24	30-Dec-24	-106								
Pipe Bridge C Piping from Turbine Bld to ACC 3		81	81		03-Mar-25	22-May-25	07-Oct-24	26-Dec-24	-147								
13-2730(M64)	Piping Installation Works	60	60	0%	03-Mar-25	01-May-25	07-Oct-24	05-Dec-24	-147								
13-2740(M64)	Piping Pressure Test	60	60	0%	24-Mar-25	22-May-25	28-Oct-24	26-Dec-24	-147								
Chimney Flue Gas Ducting Works		214	92		25-Jun-24 A	01-Apr-25	27-Sep-24	19-Dec-24	-103								
13-2510(7)	Fabrication and Delivery of Chimney Flue Gas Duct	110	21	80.91%	25-Jun-24 A	20-Jan-25	27-Sep-24	17-Oct-24	-95								
13-2610	Line 1 & 2 Flue Gas Duct Erection Works and weld test	50	50	0%	31-Dec-24	18-Feb-25	27-Sep-24	15-Nov-24	-95								
13-2610-0(M81)	Line 3 & 4 Flue Gas Duct Erection Works and weld test	50	50	0%	17-Jan-25	07-Mar-25	02-Oct-24	20-Nov-24	-107								
13-2610-0(M81)10	Line 5 & 6 Flue Gas Duct Erection Works and weld test	50	50	0%	26-Jan-25	16-Mar-25	11-Oct-24	29-Nov-24	-107								
13-2610-1(6F)	Line 1, 2 & 3 South Side Pipe connection between pipe bridge and chimney	9	9	0%	27-Feb-25	07-Mar-25	16-Nov-24	24-Nov-24	-103								
13-2610-2(6F)	Line 4, 5 & 6 North Side Pipe connection between pipe bridge and chimney	9	9	0%	17-Mar-25	25-Mar-25	30-Nov-24	08-Dec-24	-107								
13-2620	Line 1 & 2 Flue Gas Duct Insulation Works	12	12	0%	21-Mar-25	01-Apr-25	25-Nov-24	06-Dec-24	-116								
13-2630	CEMS Delivery and installation (3nrs.)	30	30	0%	24-Feb-25	25-Mar-25	20-Nov-24	19-Dec-24	-96								
13-2700(6F)	Flue Gas Duct Instrumentation Works	30	30	0%	24-Feb-25	25-Mar-25	20-Nov-24	19-Dec-24	-96								
13-2710(6F)	Equipment installation	30	30	0%	24-Feb-25	25-Mar-25	20-Nov-24	19-Dec-24	-96								
Landscape, External Road and Drains Works		1144	260		28-Apr-22 A	16-Sep-25	02-Aug-24	26-Sep-25	10								
Site Wide/External BS System		245	245		14-Jan-25	16-Sep-25	27-Nov-24	14-Jun-25	-94								
14-1000(M81)	BS Works for Weighbridge	45	45	0%	14-Feb-25	30-Mar-25	28-Nov-24	11-Jan-25	-78								
14-1100(6D)	Site Wide and External BS System	200	200	0%	01-Mar-25	16-Sep-25	27-Nov-24	14-Jun-25	-94								
14-3030(7)	Electrical Services Installation at Berth Area	90	90	0%	14-Jan-25	14-Apr-25	06-Feb-25	06-May-25	22								
External Utilities Works		1134	250		28-Apr-22 A	06-Sep-25	02-Aug-24	26-Sep-25	20								
External Utilities C&S Works		338	250		07-Sep-24 A	06-Sep-25	02-Aug-24	19-Jul-25	-49								
14-1055(7)	Cable Duct and Drawpit	250	250	0%	31-Dec-24	06-Sep-25	11-Nov-24	19-Jul-25	-49								

Activity ID	Activity Name	Original Duration	Remaining Duration	Activity % Complete	Current Start	Current Finish	Late Start	Late Finish	Total Float	M85 Remarks	2024											
											Dec 85	Jan 86	Feb 87	Mar 88								
Turbine Hall & CCCW Building 11kV T&C																						
16-1940(1)	Systemwise Construction Completion Inspection and Testing	7	7	0%	30-Jan-25	05-Feb-25	16-Oct-24	22-Oct-24	-106													
16-1940(7)	Conduct Site Acceptance Tests (SAT)	15	15	0%	06-Feb-25	20-Feb-25	23-Oct-24	06-Nov-24	-106													
16-1950(7)	Conduct System Commissioning Tests	30	30	0%	21-Feb-25	22-Mar-25	07-Nov-24	06-Dec-24	-106													
Mechanical Treatment and Water Treatment Plant 11kV T&C																						
16-2200(M61)	Systemwise Construction Completion Inspection	14	14	0%	27-Jan-25	10-Feb-25	24-Oct-24	06-Nov-24	-95													
16-2210(7)	Conduct Site Acceptance Tests (SAT)	15	15	0%	10-Feb-25	25-Feb-25	07-Nov-24	21-Nov-24	-95													
16-2220(7)	Conduct System Commissioning Tests	15	15	0%	25-Feb-25	12-Mar-25	22-Nov-24	06-Dec-24	-95													
MVAC & OCS System T&C																						
16-1150	Systemwise Construction Completion Inspection	14	14	0%	24-Mar-25	07-Apr-25	13-Dec-24	26-Dec-24	-101													
Compressor & CCCW Bld T&C																						
16-1210	Systemwise Construction Completion Inspection	7	7	0%	09-Jan-25	16-Mar-25	01-Oct-24	06-Dec-24	-100													
16-1220(7)	Conduct Site Acceptance Tests	30	30	0%	16-Jan-25	14-Feb-25	08-Oct-24	06-Nov-24	-100													
16-1230(7)	Conduct System Commissioning Tests	30	30	0%	15-Feb-25	16-Mar-25	07-Nov-24	06-Dec-24	-100													
Fuel Oil System T&C																						
16-1240	Systemwise Construction Completion Inspection	7	7	0%	08-Feb-25	15-Feb-25	02-Nov-24	08-Nov-24	-99													
16-1250(7)	Conduct Site Acceptance Tests	14	14	0%	15-Feb-25	01-Mar-25	09-Nov-24	22-Nov-24	-99													
16-1260(7)	Conduct System Commissioning Tests	14	14	0%	01-Mar-25	15-Mar-25	23-Nov-24	06-Dec-24	-99													
CCCW System T&C																						
16-1270	Systemwise Construction Completion Inspection	14	14	0%	07-Feb-25	20-Feb-25	24-Oct-24	06-Nov-24	-106													
16-1280(7)	Conduct Site Acceptance Tests	30	30	0%	21-Feb-25	22-Mar-25	07-Nov-24	06-Dec-24	-106													
16-1290(7)	Conduct System Commissioning Tests	30	30	0%	23-Mar-25	21-Apr-25	07-Dec-24	05-Jan-25	-106													
Turbine Hall Process T&C																						
Turbine Hall Module 1																						
16-1300(7)	Turbine Module 1 Systemwise Construction Completion Inspection	20	20	0%	16-Feb-25	08-Mar-25	25-Nov-24	14-Dec-24	-83													
16-1310(7)	Turbine Module 1 Conduct Site Acceptance Tests	60	60	0%	08-Mar-25	07-May-25	15-Dec-24	12-Feb-25	-83													
Turbine Hall Module 2																						
16-1330(7)	Turbine Module 2 Systemwise Construction Completion Inspection	30	30	0%	27-Mar-25	25-Apr-25	15-Dec-24	13-Jan-25	-102													
Turbine Hall Module 3																						
16-1360(7)	Turbine Module 3 Systemwise Construction Completion Inspection	30	30	0%	27-Mar-25	25-Apr-25	18-Dec-24	16-Jan-25	-99													
Desalination & Demineralization Process T&C																						
Stage 1 (WTP Potable to Demin)																						
16-1295-1(M82)	Systemwise Construction Completion Inspection	13	13	0%	12-Jan-25	25-Jan-25	22-Oct-24	03-Nov-24	-83													
16-1295-2(M82)	Conduct Site Acceptance Tests	13	13	0%	15-Jan-25	28-Jan-25	25-Oct-24	06-Nov-24	-83													
16-1295-3(M82)	Conduct System Commissioning Tests	30	30	0%	28-Jan-25	27-Feb-25	07-Nov-24	06-Dec-24	-83													
16-2000(6D)	Provision of fresh water for testing	0	0	0%	27-Feb-25		07-Dec-24		-83	Remove Predecessor 16-1320 FSO; Remove Successor 16-1090 FSO; Add Successor 16-1660 FSO; Add Predecessor 16-1295-1(M82) FSO												
Stage 2 (WTP Remaining)																						
16-1300	Systemwise Construction Completion Inspection	13	13	0%	05-Mar-25	16-Apr-25	14-Dec-24	25-Jan-25	-81													
16-1310	Conduct Site Acceptance Tests	30	30	0%	18-Mar-25	16-Apr-25	27-Dec-24	25-Jan-25	-81	Remove Predecessors 11-1600(7), 11-1610(7), 11-1620(7) & 11-1630(7) FSO												
WWTP Process T&C																						
Stage 1 (WWTP Pre-Treatment)																						
16-1625-1(M82)	Systemwise Construction Completion Inspection	7	7	0%	23-Feb-25	02-Mar-25	01-Jan-25	07-Jan-25	-54													
16-1625-2(M82)	Conduct Site Acceptance Tests (SAT)	13	13	0%	23-Feb-25	08-Mar-25	01-Jan-25	13-Jan-25	-54													
16-1625-3(M82)	Conduct System Commissioning Tests (with temporary power)	30	30	0%	08-Mar-25	07-Apr-25	14-Jan-25	12-Feb-25	-54													
Stage 2 (WWTP Remaining)																						
16-1330	Systemwise Construction Completion Inspection	7	7	0%	23-Mar-25	21-Apr-25	22-Dec-24	20-Jan-25	-91													
16-1340	Conduct Site Acceptance Tests (SAT)	30	30	0%	23-Mar-25	21-Apr-25	22-Dec-24	20-Jan-25	-91													
Ash Treatment Equipments T&C																						
16-1970(M62)	Systemwise Construction Completion Inspection - Module 1	30	30	0%	06-Jan-25	04-Feb-25	29-Aug-24	27-Sep-24	-130													
16-1970-1(M68)	Systemwise Construction Completion Inspection - Module 2	30	30	0%	17-Feb-25	18-Mar-25	28-Sep-24	27-Oct-24	-142													
16-1970-2(M68)	Systemwise Construction Completion Inspection - Module 3	30	30	0%	17-Feb-25	18-Mar-25	29-Oct-24	27-Nov-24	-111													
Crane System T&C																						
Crane System T&C for Module 1 Hot Commissioning																						
Waste Crane System T&C																						
16-1390	Systemwise Construction Completion Inspection	7	7	0%	22-Mar-25	28-Mar-25	19-Jan-25	25-Jan-25	-62	Changed dur to 7d												
16-1400	Conduct Site Acceptance Tests	15	15	0%	29-Mar-25	12-Apr-25	26-Jan-25	09-Feb-25	-62	Changed dur to 15d												
Ash Crane System T&C																						
16-1970	Systemwise Construction Completion Inspection	14	14	0%	22-Mar-25	04-Apr-25	13-Dec-24	26-Dec-24	-99													
Control SCADA Systems T&C																						
16-1780	Systemwise Construction Completion Inspection	14	14	0%	30-Jan-25	12-Feb-25	24-Oct-24	06-Nov-24	-98													
16-1790	Conduct Site Acceptance Tests	30	30	0%	24-Feb-25	26-Mar-25	07-Nov-24	06-Dec-24	-109													
16-1800	Conduct System Commissioning Tests	30	30	0%	26-Mar-25	25-Apr-25	07-Dec-24	05-Jan-25	-109													
CEMS Systems T&C																						
16-1970(6G)	Systemwise Construction Completion Inspection	3	3	0%	26-Mar-25	28-Mar-25	20-Dec-24	22-Dec-24	-96													
16-1980(6G)	Conduct Site Acceptance Tests	7	7	0%	29-Mar-25	04-Apr-25	23-Dec-24	29-Dec-24	-96													
Monorail Hoist System T&C																						
16-2030(M61)	Systemwise Construction Completion Inspection	14	14	0%	25-Mar-25	07-Apr-25	10-Apr-25	23-Apr-25	16													

Activity ID	Activity Name	Original Duration	Remaining Duration	Activity % Complete	Current Start	Current Finish	Late Start	Late Finish	Total Float	M85 Remarks	2024			
											Dec 85	Jan 86	Feb 87	Mar 88
Earthing & Lightning Protection System T&C														
16-1970(6D)	Systemwise Construction Completion Inspection	65	65	0%	19-Jan-25	24-Mar-25	29-Sep-24	02-Dec-24	-112					
16-1980(6D)	Conduct Site Acceptance Tests (SAT)	10	10	0%	19-Jan-25	28-Jan-25	29-Sep-24	08-Oct-24	-112					
16-1990(6D)	Conduct System Commissioning Tests	25	25	0%	29-Jan-25	22-Feb-25	09-Oct-24	02-Nov-24	-112					
Incineration Processing T&C														
Module 1 & Equipments (Train 1 & 2)														
16-1540	Site Acceptance Test (Systemwise Construction Completion Inspection)	304	151	0%	15-May-24 A	30-May-25	31-Jul-24	27-Dec-24	-154					
16-1550	Site Acceptance Test (Pre-commissioning Test)	242	90	0%	15-May-24 A	30-Mar-25	01-Aug-24	29-Oct-24	-152					
Module 2 & Equipments (Train 3 & 4)														
16-1560	Site Acceptance Test (Systemwise Construction Completion Inspection)	120	46	61.5%	15-May-24 A	28-Feb-25	12-Aug-24	27-Sep-24	-154					
16-1570	Site Acceptance Test (Pre-commissioning Test)	120	90	25%	10-Jun-24 A	30-Mar-25	01-Aug-24	29-Oct-24	-152					
Module 3 & Equipments (Train 5 & 6)														
16-1580	Site Acceptance Test (Systemwise Construction Completion Inspection)	150	117	0%	30-Oct-24 A	28-Apr-25	01-Aug-24	26-Nov-24	-153					
16-1590	Site Acceptance Test (Pre-commissioning Test)	120	88	26.67%	30-Oct-24 A	30-Mar-25	01-Aug-24	27-Oct-24	-154	Change Relationship from Predecessor 13-2720 from FS-30 to FF14				
16-1590	Site Acceptance Test (Pre-commissioning Test)	90	90	0%	01-Jan-25	30-May-25	31-Jul-24	27-Dec-24	-154	Change Relationship from Predecessor 13-2690 from FS0 to FF30				